

**Hepworth**



**PVC - U DUCT PIPE AND ACCESSORIES**

## TABLE OF DIMENSIONS

uPVC Duct Pipes (Metric series) Manufactured in accordance to DIN 8062								
Nominal outside diameter (dn)			CL - 4		CL- 6		CL - 10	
Size	Min (dn)	Max (dn)	Minimum WT (mm)	Maximum WT (mm)	Minimum WT (mm)	Maximum WT (mm)	Minimum WT (mm)	Maximum WT (mm)
32	32	32.2	--	--	--	--	1.60	2.00
40	40	40.2	--	--	--	--	1.90	2.30
50	50	50.2	--	--	1.50	1.90	2.40	2.90
63	63	63.3	--	--	1.90	2.30	3.00	3.60
75	75	75.3	1.50	1.90	2.20	2.70	3.60	4.20
90	90	90.3	1.80	2.20	2.70	3.20	4.30	5.00
110	110	110.4	2.20	2.70	3.20	3.80	5.30	6.10
125	125	125.4	2.50	3.00	3.70	4.30	6.00	6.90
140	140	140.5	2.80	3.30	4.10	4.80	6.70	7.60
160	160	160.5	3.20	3.80	4.70	5.40	7.70	8.70
180	180	180.6	3.60	4.20	5.30	6.10	8.60	9.70
200	200	200.6	3.90	4.60	5.90	6.70	9.60	10.80
225	225	225.7	4.40	5.10	6.60	7.50	10.80	12.10
250	250	250.8	4.90	5.60	7.30	8.30	11.90	13.30
280	280	280.9	5.50	6.30	8.20	9.30	13.40	15.00
315	315	316.0	6.20	7.10	9.20	10.40	15.00	16.70
400	400	401.2	7.90	8.90	11.70	13.10	19.10	21.30

## TABLE OF DIMENSIONS

uPVC Duct Pipes (Metric series) Dimensionally manufactured in accordance to EN 1452						
Nominal outside diameter (dn)			CL -6		CL -10	
Size	Min (dn)	Max (dn)	Minimum WT (mm)	Maximum WT (mm)	Minimum WT (mm)	Maximum WT (mm)
32	32.0	32.2	-	-	1.6	2
40	40.0	40.2	1.5	1.9	1.9	2.3
50	50.0	50.2	1.6	2	2.4	2.9
63	63.0	63.3	2	2.4	3.00	3.50
75	75.0	75.3	2.30	2.80	3.60	4.20
90	90.0	90.3	2.80	3.30	4.30	5.00
110	110	110.4	2.70	3.20	4.20	4.90
125	125	125.4	3.10	3.70	4.80	5.50
140	140	140.5	3.50	4.10	5.40	6.20
160	160	160.5	4.00	4.60	6.20	7.10
200	200	200.6	4.90	5.60	7.70	8.70
225	225	225.7	5.50	6.30	8.60	9.70
250	250	250.8	6.20	7.10	9.60	10.80
280	280	280.9	6.90	7.80	10.70	12.00
315	315	316.0	7.70	8.70	12.10	13.60
400	400	401.2	9.80	11.00	15.30	17.10

## TABLE OF DIMENSIONS

### DUCT PIPE BS 3506 STANDARD INCH SIZE - DIMENSIONALLY

SIZE	OD		WALL THICKNESS					
			CLASS B		CLASS C		CLASS D	
INCH	MIN	MAX	MIN	MAX	MIN	MAX	MIN	MAX
2	60.20	60.50			2.50	3.00	3.10	3.70
2½	75.00	75.30			3.00	3.50	3.90	4.50
3	88.70	89.10	2.90	3.40	3.50	4.10	4.60	5.30
4	114.10	114.50	3.40	4.00	4.50	5.20	6.00	6.90
6	168.00	168.50	4.50	5.20	6.60	7.60	8.80	10.20
8	218.80	219.40	5.30	6.10	7.80	9.00	10.30	11.90
10	272.60	273.40	6.60	7.60	9.70	11.20	12.80	14.80
12	323.40	324.30	7.80	9.00	11.50	13.30	15.20	17.50

### DUCT PIPE FOR ELECTRICAL & TELEPHONE CABLE

PRODUCT	OD		WALL THICKNESS	
	MIN	MAX	MIN	MAX
54D Duct pipe	96.30	96.70	3.25	3.65
54 Duct pipe	53.80	54.00	1.55	1.70

PRODUCT	OD		WALL THICKNESS	
	MIN	MAX	MIN	MAX
54D Duct pipe	96.30	96.70	3.05	3.45
54 Duct pipe	56.30	56.70	3.05	3.45

Above pipe size are approved by OOREDOO, QATAR (Formerly known as Q-TEL)

### CONDUIT DUCT PIPE

SIZE	OD		WALL THICKNESS			
			CLASS D		CLASS E	
INCH	MIN	MAX	MIN	MAX	MIN	MAX
1	33.40	33.70			2.20	2.70
1½	48.10	48.40	2.5	3.00	3.10	3.70

### NON-STANDARD DUCT PIPE

PRODUCT	OD		WALL THICKNESS	
	MIN	MAX	MIN	MAX
110 Duct pipe	110	110.40	2.40	3.00
160 Duct pipe	160	160.40	3.60	4.00

Above pipe size are approved by Electrical Network Affairs of KAHRAMAA, Qatar

### SPECIFICATIONS

Manufactured to dimensionally in according with DIN 8062, BSEN 1452 & BS 3506 Standard

STANDARD LENGTHS	: 6m with socket. (Non Standard lengths or diameters to special order.)
STANDARD COLOUR	: Dark Grey and Black or to Customer Specification
BENDS	: Long and short radius 22.5°, 45°, 90°
CLUSTER BENDS	: To customer requirements
JUNCTIONS	: Square and swept tees, crosses and fittings, double sockets, bellmouths, end caps, dayware adaptors.
JOINTING	: Spigot and socket - dry fit or solvent cement for situations demanding sealed joints

### PROPERTIES

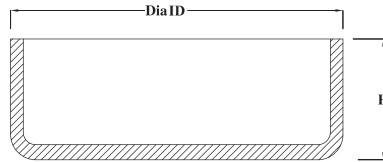
SPECIFIC GRAVITY	: >1.50 g/cm <sup>3</sup>
VICAT SOFTENING POINT	: 80°C
INFALMMABILITY	: Will not support combustion
SPECIFIC HEAT	: 1.00Kj / Kg / °C
THERMAL CONDUCTIVITY AT 23° C	: 0.15 W / mk <sup>2</sup>
E-MODULUS AT 23° C	: >2400 Nmm <sup>2</sup>

### APPLICATIONS

- Telephone Cables
- High Voltage Underground Cables
- Street and Housing Power Supplies
- Piped T.V and Radio
- Factory and Industrial Applications
- Sheathing of water and Gas Services

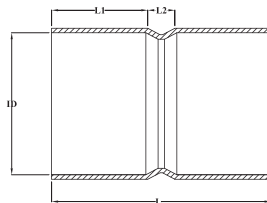
## PRODUCT LIST

### UPVC MOULDED DUCT END CAP



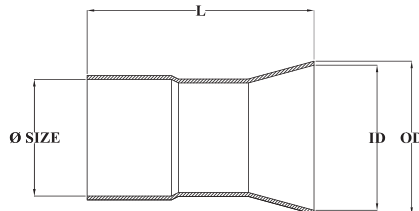
Ø / SIZE	ID	H
2" C / 56	60.5 / 54	30
3" C / 54D	89.5 / 96.7	30
4" C / 110mm	114.1 / 114.5	30
6" C / 160mm	168.1 / 168.5	30
8" C / 200mm	218.8 / 219.4	30

### DUCT SOCKETS



Ø / SIZE	OD	L	L1	L2
2" C / 56	60.5 / 54	116.5	50	14
3" C / 54D	89.5 / 96.7	162	65	30
4" C / 110mm	114.5 / 110	172	76	24
6" C / 160mm	168.5 / 160	258	116	34
8" C / 200mm	219.4 / 200	294	132	45

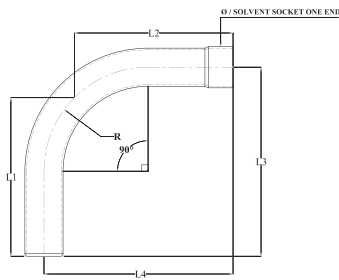
### DUCT BELLMOUTHS



Ø / SIZE	OD	ID	L	WT
2" C / 56	117	110	169	3.5 / 1.63
3" C / 54D	168	161.5	222	3.5 / 3.45
4" C / 110mm	212	201	265	4 / 3.40
6" C / 160mm	265	250.5	340	5.00
8" C / 200mm	332	315	370	6.25

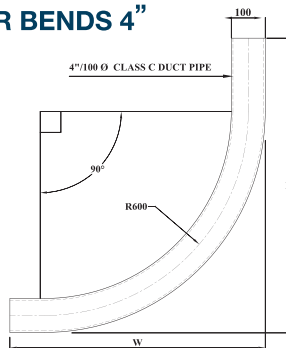
## PRODUCT LIST

### DUCT 90/45° LR BENDS



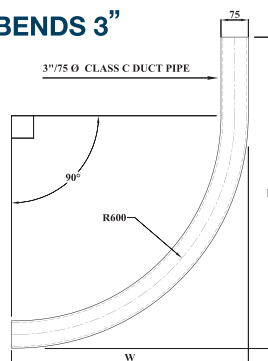
Ø / SIZE	L1	L2	L3	L4	R
1"	220	220	280	280	200
1½"	310	310	400	400	300
2"C/56	481	481	567	567	300
3"C/54D	638	638	755	755	400
4"C/110mm	626	626	683	683	400
6"C/160mm	699	699	717	717	400
8"C/200mm	914	914	1090	1090	600

### DUCT 90° STREET LIGHTING LR BENDS 4"



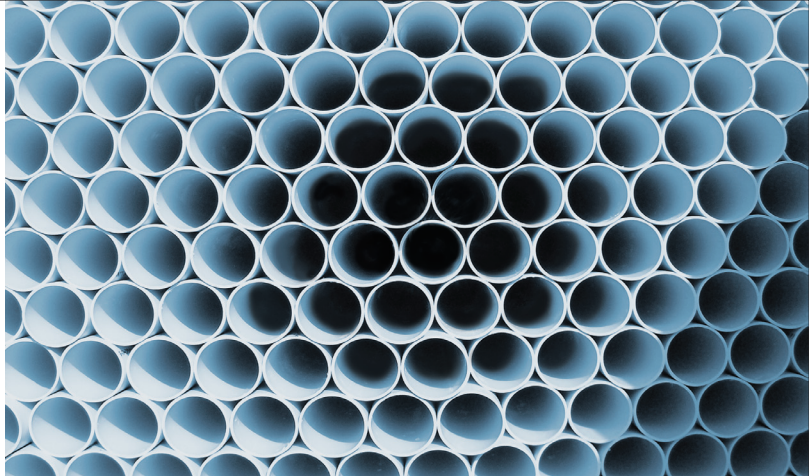
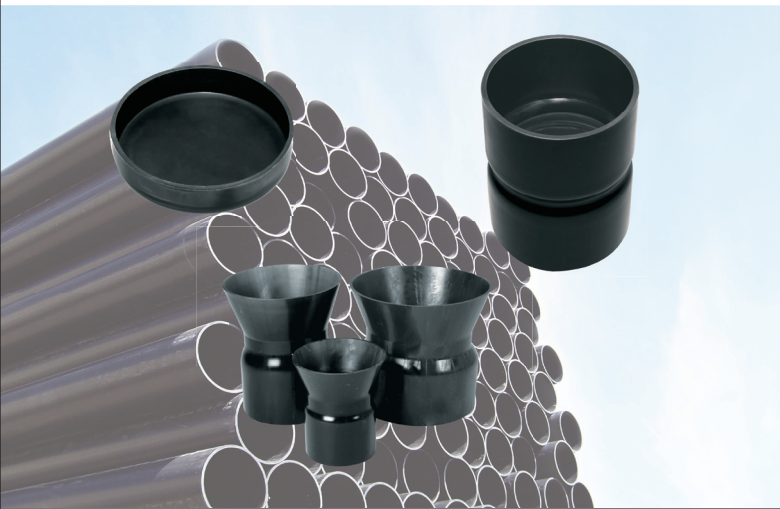
POLES	Ø	RADIUS	H	W
12 Mtr.	4"CLASS C	600 mm	1050 mm	600 mm
14 Mtr.	4"CLASS C	600 mm	1050 mm	600 mm
16/18 Mtr.	4"CLASS C	600 mm	1070 mm	600 mm
25 Mtr.	4"CLASS C	600 mm	1150 mm	1150 mm

### DUCT 90° STREET LIGHTING LR BENDS 3"



POLES	Ø	RADIUS	H	W
3.5 Mtr.	3"CLASS C	600 mm	700 mm	600 mm
5 Mtr.	3"CLASS C	600 mm	700 mm	600 mm
6 Mtr.	3"CLASS C	600 mm	1050 mm	600 mm
8 Mtr.	3"CLASS C	600 mm	1050 mm	600 mm
10 Mtr.	3"CLASS C	600 mm	1050 mm	600 mm





## HEAD OFFICE

### HEP WORTH PME LLC DUBAI

P.O.Box 2345, Dubai, UAE  
Tel: +971 4 2894670  
Fax: +971 4 2894620 /1  
Email: info@corys.ae

**SALES/CUSTOMER SERVICE**  
customer.service@corys.ae

## U.A.E. OFFICES

### ABU DHABI

P.O. Box: 4894, Abu Dhabi, UAE  
Tel: +971 2 6727585  
Fax: +971 2 6783578  
Email: hpmeauh@corys.ae

### AL AIN

P.O. Box: 80862, Al Ain, UAE  
Tel: +971 3 7210727  
Fax: +971 3 7211292  
Email: hpmealn@corys.ae

## QATAR OFFICE

### DOHA

HEP WORTH PME (QATAR) W.L.L.  
P.O. Box 50207, Doha, Qatar  
Tel: +974 44506810  
Fax: +974 44506811  
Email: info@hepworthpme.com.qa

### MESAIEED

HEP WORTH PME (QATAR) W.L.L.  
P.O. Box 50207, Mesaieed, Qatar  
Tel: +974 44760588  
Fax: +974 44760525

## OMAN

CORYS PIPE INDUSTRY LLC  
P.O Box: 117, PC 113,  
Ghala Business District,  
Al Azaiba South, Muscat Governorate,  
Tel: +968 24217626/20  
Fax: +968 24210032  
Email: info.oman@corys.ae

### CUSTOMER SERVICE

customer-service-oman@corys.ae

## BAHRAIN

HEP WORTH W.L.L.  
Building 1, Avenue 0010  
P.O. Box 143, Manama, Bahrain  
Tel: +973 17672050  
Fax: +973 17672583  
Email: info.bahrain@corys.ae

[www.hepworth.ae](http://www.hepworth.ae)