

GF Piping Systems

+GF+

Embrace the cold

COOL-FIT 2.0





Drawbacks and inefficiencies of traditional cooling systems

Lack of specialized installers, frequent maintenance caused by corrosion, and energy loss are some of the many challenges affecting efficient cooling processes. Addressing these issues is crucial for ensuring reliable installations and uninterrupted operations.

Cooling systems for air conditioning, industrial cooling and process cooling consume large amounts of energy to maintain a constant system temperature. Selecting the appropriate piping system to support the cooling circuit is of high importance for planners, installers, and operators who aim for an efficient and reliable cooling process.

What should be considered in particular?

The two most important factors are the material and the insulation. With conventional metal installations, the risk of condensation and subsequent corrosion is exceptionally high. This risk also occurs in systems that have been post-insulated: The insulation material can be damaged during installation, and small gaps between the piping system and the insulation layer can occur, allowing condensation and subsequent corrosion. Furthermore, the added weight of metal and the subsequent insulation process necessitate extra equipment and steps, placing further efforts on the already limited capacity of installers.



Non-corrosive materials and vapor sealed insulation are of utmost importance for reliable and efficient piping systems in cooling applications.



Soft insulation materials are easily damaged by mechanical or environmental impacts as e.g. UV light, chemicals, etc.



Condensation caused by damaged insulation leads to significant corrosion and high maintenance cost during the life time of a system.



The lack of certified manpower on-site leads to longer installation times and delays in planned operation start.



The high weight of steel pipe require robust building constructions and heavy duty equipment for the installation.



Cooling systems are installed towards end of a building construction. The long and complex installation times lead to time pressure.

COOL-FIT 2.0

Extreme reliability

The condensation and corrosion-free piping system for operations with no interruptions, zero maintenance, and highest efficiency.



System integrity

The complete product portfolio consists of pre-insulated pipes, fittings, valves, flexible hoses, and all tools necessary for a safe and reliable installation.



Efficiency

High grade pre-insulation enhances thermal energy efficiency (by 30% in average) with huge impact on costs and the planet's thermal energy consumption.



Reliable and safe

The plastic based system ensures maintenance-free operation for safe 24/7 production processes over a 25-year minimum lifespan.



Corrosion-free

100% corrosion-free and longer lasting than metal alternatives. No incrustation for reliable long-term efficient operation.



Fast and easy

Simple jointing with electrofusion saves time and helps to maintain the quality of joints even without certified personnel.



Lightweight

In average 60% less weight than steel pipes, allowing single-person installs and more light weight building constructions.



Designed for air conditioning and industrial applications

Dimensions from 16 to 140 mm for indoor applications.
In combination with COOL-FIT 4.0 as well for outdoor use up to dimension 450 mm.

Complete system integrity

With COOL-FIT, GF Piping Systems offers a unique, top-notch piping system solution, including pre-insulated pipes, fittings, valves, flexible hoses, and tools. The system is available in a standard version or with a higher fire classification (COOL-FIT 2.0F), to withstand even harsher conditions.

Pre-insulated valves

GF Piping Systems' pre-insulated valves are an integral part of the COOL-FIT system and ensure an efficient cooling process. Pre-insulated valves ensure that the entire piping system is thoroughly insulated and perfectly sealed.



Foam removal and peeling tools

GF Piping Systems takes the hassle out of foam removal and peeling. Easy to use foam removal tools ensure consistent peeling quality when preparing pipe surfaces. The tools are designed in such a way that pipes of different diameters can be prepared for installation in no time at all.

Pre-insulated pipes

Easy to joint and install, lightweight pre-insulated pipes help to minimize energy loss and reduce long-term running costs. Insulated with high-energy efficient foam, they are ideal for both new construction and retrofitting.

Pre-insulated fittings

When creating branch lines, pre-insulated fittings make installation much easier and the fittings cover multiple dimension possibilities as well.



Bridging big to small dimensions

The COOL-FIT 2.0 Push System is an addition to the existing system COOL-FIT 2.0, by extending the product range with smaller piping dimensions to reach e.g the fan coil.

COOL-FIT Weld-in port

The COOL-FIT Weld-in port simplifies the installation of additional sensors and branches across multiple pipe sizes at any position of a pipe.

Applications

Cooling applications

COOL-FIT 2.0 optimizes any air conditioning, process cooling and industrial air conditioning installations.



Air Conditioning in Buildings

Uninterrupted cooling processes for air conditioning ensure an ambient and comfortable environment at workplaces, residential buildings and hospitals.



Industrial Air Conditioning

An ambient work environment for the employees and stable temperatures for machinery help to sustain uninterrupted and efficient production processes.



Air Conditioning in Cruise Ships

Corrosion-free air conditioning circuits play a vital role in onboard accommodation as it helps to have a healthy and pleasant atmosphere concerning temperature and humidity.



Process Cooling

Production processes require stable temperatures for machinery. Reliable and maintenance-free cooling systems help to make production more efficient.

References

Reliable cooling systems for sustainable processes - approved by customers

At GF Piping Systems, we use cutting-edge technology designed for versatile use in cooling applications. It combines corrosion and maintenance-free components with a reliable and efficient factory pre-insulated system. We've successfully delivered more than 500 customer projects in multiple industries and installed more than 1500 kilometers of COOL-FIT pipe globally.



“Porta Samedan” shopping mall, Switzerland

The vacation region Engadin is home to the new “Porta Samedan” shopping mall with the Minergie-P standard label. In realizing the project, nothing was more important than sustainability. The owners champion the use of renewable energy sources and sustainable building materials such as the COOL-FIT pre-insulated plastic piping system. And also the sustainable operation of the local shops is guaranteed.



Label printing plant: "D.E.S.", Landau, Germany

The special printing plant D.E.S. – The label specialist in the German town of Landau (Palatinate region) produces high-quality labels for wine bottles, spirits, and cosmetics - a total of 110 million units per year. The offset and digital printing machines in the 2000-square-meter production hall require a room climate that is as stable as possible, regardless of the time of year. Tolerance range: +/- 2.5 degrees Celsius. This is the only way to guarantee top quality printing. COOL-FIT 2.0 provides this reliability as part of the cooling solution while helping the company to reduce energy costs.



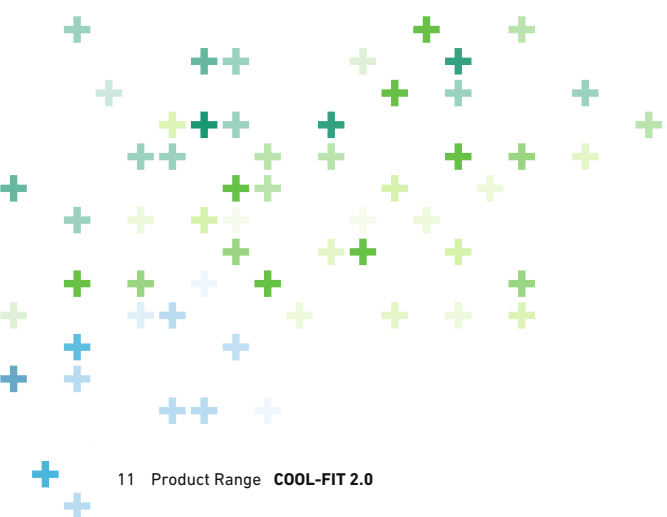
Zonzo Estate - The Yarra Valley, Yarra Glen, Australia

In late 2019, Zonzo Estate began converting an empty warehouse into a brand-new winery with the aim of producing the best drop possible. The cooling circuit uses a mixture of glycol and water, circulating at a temperature of -5°C and a pressure of 4 bar, and is supported by 200 kW of chiller capacity. Thanks to the preinsulated piping, it looks great and has incredible thermal energy efficiency, with minimal energy loss.



Fassmer Shipyard, Germany

Using COOL-FIT, GF Piping Systems' pre-insulated plastic piping system, Fr. Fassmer GmbH & Co. KG, a leading German shipyard for specialized high-performance vessels, addressed a condensation issue in the HVAC piping system. The solution, used in one of their latest projects, also brought several other benefits and efficiencies to the customer's operations.



Sealing lip

For vapor tight sealing between the fitting and the pipe without using glue, silicon or shrink sleeves.

Pre-insulated pipe

For fast installation, pipes are prepared in bars with free, peeled and protected ends. The GF foam removal and peeling tool allow fast preparation of free ends for shorter sections.

Welding indicator

Visual and haptic inspection for indication of successful jointing after the welding process

Pin connectors

For connecting the welding machine to the fitting and for starting the process manually or remotely.

Welding wires

Automated welding process for a safe connection of fitting and pipe.

Welding code

For a guided and tracked welding process.

3-in-1 Media Pipe - Insulation - Jacket

Confident and efficient installation

Experience confident installations with COOL-FIT, where safety, simplicity, and speed are paramount.

Joining our COOL-FIT System is effortless with electrofusion technology, where fittings are swiftly heated by electric current, melting and fusing the surrounding material for a secure connection. Compared to traditional methods, this process is in average 50% faster, minimizing the risk of

leaks. With all welding data conveniently stored, project documentation is a breeze. The COOL-FIT Push System provides mechanical push fittings and bendable pipe to connect the cooling loop to fan coils or tanks without efforts. Enjoy ultimate flexibility in your projects with the COOL-FIT Weld-in port, simplifying the addition of sensors or branches across various pipe sizes. Experience hassle-free installations and enhanced functionality with COOL-FIT's customer-centric solutions.



Fixation

Easy fixation by use of standard clamps for plastic pipe. No cold clamps required.

Pre-insulated fitting

For fast and easy installation thanks to pre-insulation. No manual post-insulation required.



Learn how to make the perfect weld in the COOL-FIT video tutorial.

gfps.com/cool-fit

Minimal environmental impact

COOL-FIT leads the way when it comes to energy-efficient cooling and helps to work in a more environmentally friendly and energy-efficient manner.

The number of air conditioners in Europe will double by 2030 and significantly increase in other regions of the world, which leaves our industries with the challenge of rising energy demand. As a company that is active worldwide, it is GF Piping Systems' mission to show our commitment to sustainability by supporting our customers' success with innovative, energy-saving solutions making the collective global footprint more sustainable.

COOL-FIT environmental benefits

- COOL-FIT produces a lower environmental impact on all impact categories (compared to conventional installations).
- Saves at least 30% of thermal energy compared to traditional cooling systems, drastically reducing operating costs and CO₂ emissions.
- Non-corrosive, with at least 25-year lifetime leading to additionally saved resources related to maintenance, repairs and replacements.
- Helps achieve relevant green building declarations like DGNB, BREEAM, and LEED.
- Free of HBCD, halogens and halogenated blowing agents. It contains no chlorinated paraffins and neither lead nor tin.
- Contains no other substance of very high concern according to the REACH criteria of the European Chemicals Agency or any candidate substance.
- Strict quality management (ISO 9001) and health and safety management (OHSAS 18001) during production. GF Piping Systems is certified according to ISO 14001 for its environmental management system.



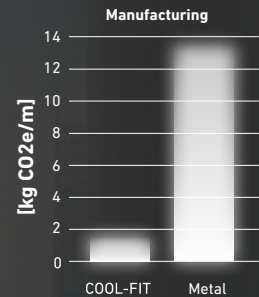
Check sustainable certificates

COOL-FIT for the environment

When comparing the lifecycle of post-insulated metal pipes, which are the most commonly used solution in cooling loops worldwide, COOL-FIT consistently emerges as a robust alternative for significant reduction of greenhouse gas emissions (GHG) in your project.

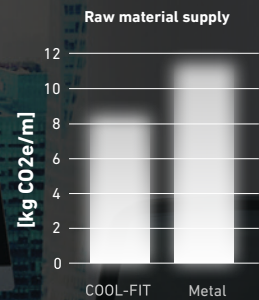
89%

less GHG emissions during manufacturing of raw materials due to lighter weight.



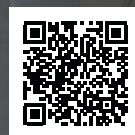
27%

less GHG emissions than metal due to less energy intense raw material extraction process.



25 years

of service life without any replacements.



Find out more

System specifications

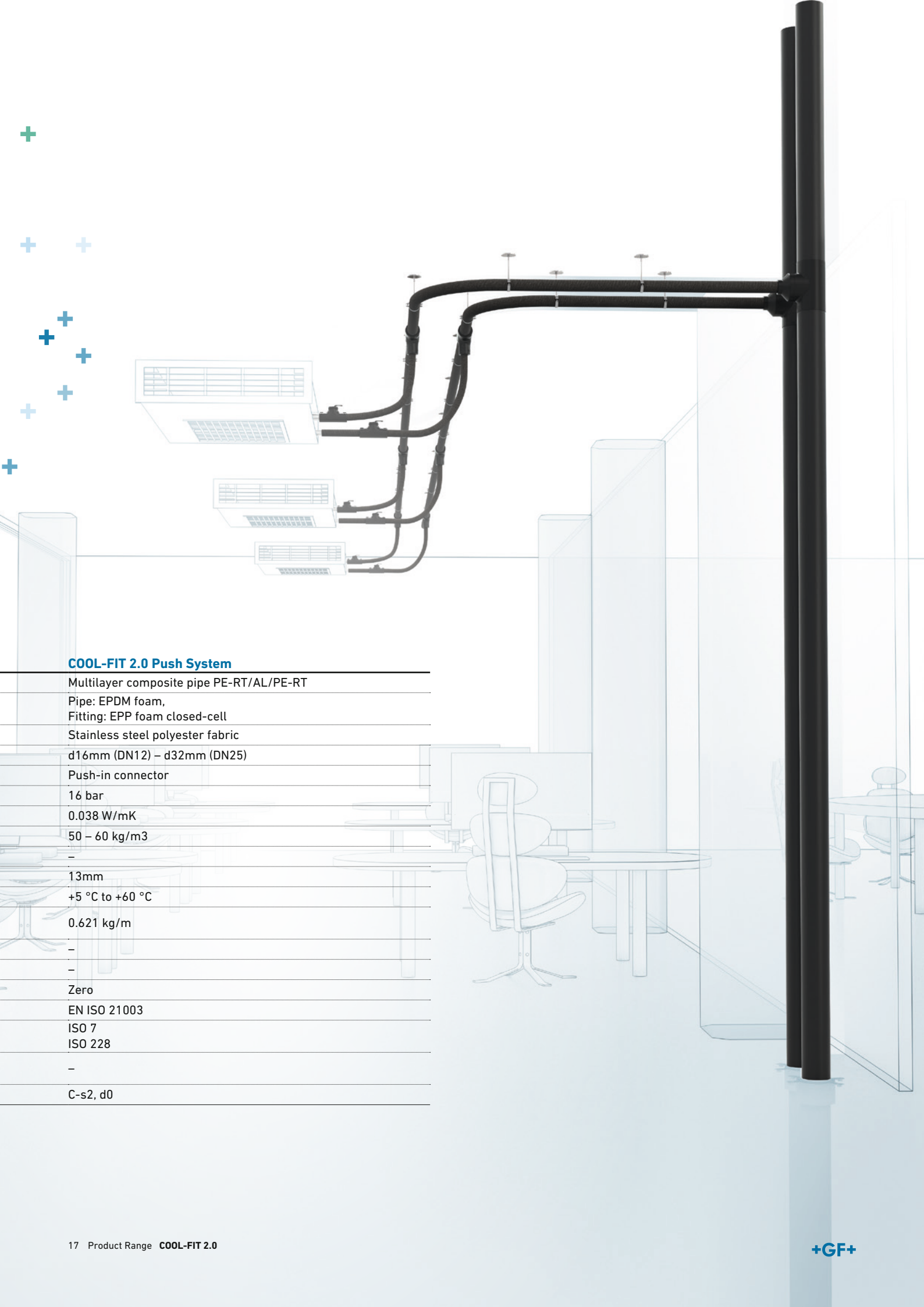
One entire system

A mainstay of the GF Piping Systems product range, COOL-FIT 2.0 is a plastic chilled-water piping system that is guaranteed not to corrode or be affected by the formation of condensation under specified condition. The rapid installation time and high energy efficiency make this system a prime option for building owners, general contractors and planners as part of commercial/residential construction, data center design and process cooling applications.

System properties

		COOL-FIT 2.0	COOL-FIT 2.0F
Materials *	Medium pipe	PE100	PE100
	Insulation	GF HE foam, halogen-free, closed-cell	GF HE foam, halogen-free, closed-cell
	Outer jacket	Pipe: HDPE, Fitting: GF-HE	Flame retardant – GF-FR
Dimensions		d32 mm (DN25) – d140 mm (DN125)	d32 mm (DN25) – d140 mm (DN125)
Connection technology		Electrofusion	Electrofusion
Nominal pressure		16 bar, SDR 11	16 bar, SDR 11
Insulation	Thermal conductivity λ at 20°C	≤ 0.022 W/mK	≤ 0.022 W/mK
	Density	≥ 70 kg/m ³	≥ 70 kg/m ³
	Foam cell size	max. \emptyset 0.5 mm	max. \emptyset 0.5 mm
	Nominal thickness	22 mm	22 mm
Temperature	Medium	0 °C to +60 °C	0 °C to +60 °C
Weight (without medium)	Pipe d32 mm	1.12 kg/m	1.06 kg/m
	Pipe d110 mm	5.5 kg/m	5.39 kg/m
Environment	Resistance	Moisture- and vapor-tight	Moisture- and vapor-tight
	Ozone Depletion Potential (ODP)	Zero	Zero
Standards	Pipes & Fittings	EN ISO 15494	EN ISO 15494
	Threads	ISO 7 ISO 228	ISO 7 ISO 228
	Valves	EN ISO 16135 EN ISO 16136	EN ISO 16135 EN ISO 16136
Fire classification	EN 13501-1	E	B-s2, d0

* All three materials are firmly bonded together (for COOL-FIT 2.0 and COOL-FIT 2.0F).



COOL-FIT 2.0 Push System

Multilayer composite pipe PE-RT/AL/PE-RT

Pipe: EPDM foam,

Fitting: EPP foam closed-cell

Stainless steel polyester fabric

d16mm (DN12) – d32mm (DN25)

Push-in connector

16 bar

0.038 W/mK

50 – 60 kg/m³

–

13mm

+5 °C to +60 °C

0.621 kg/m

–

–

Zero

EN ISO 21003

ISO 7

ISO 228

–

–

C-s2, d0

One partner from planning to commissioning

With Specialized Solutions, GF Piping Systems supports the design and installation of state of the art plastic piping systems, so that owners and planners can concentrate on their daily business without interruption. GF Piping Systems is present every step of the way, from providing planning support on new projects to testing the condition of old systems.

More information at
gfps.com/specialized-solutions



Custom Product Design and Prefabrication

Having your individual needs and application in focus, our customizing teams forge the solution that fits you best, developing custom-made parts to complete systems or special solutions produced in small series, individual consulting and off-site prefabrication. Through our global network of flexible locations, we offer a wide range of comprehensive solutions. Tailored innovation, inspired by you.



Digital Libraries

The libraries cover three key areas for designing, creating, and maintaining a project: Building Information Modeling, the Plant Design Software, and the CAD Library helping you reduce costs and construction times while ensuring design accuracy and integrity. Reduce time and effort while ensuring design accuracy and integrity.





Engineering

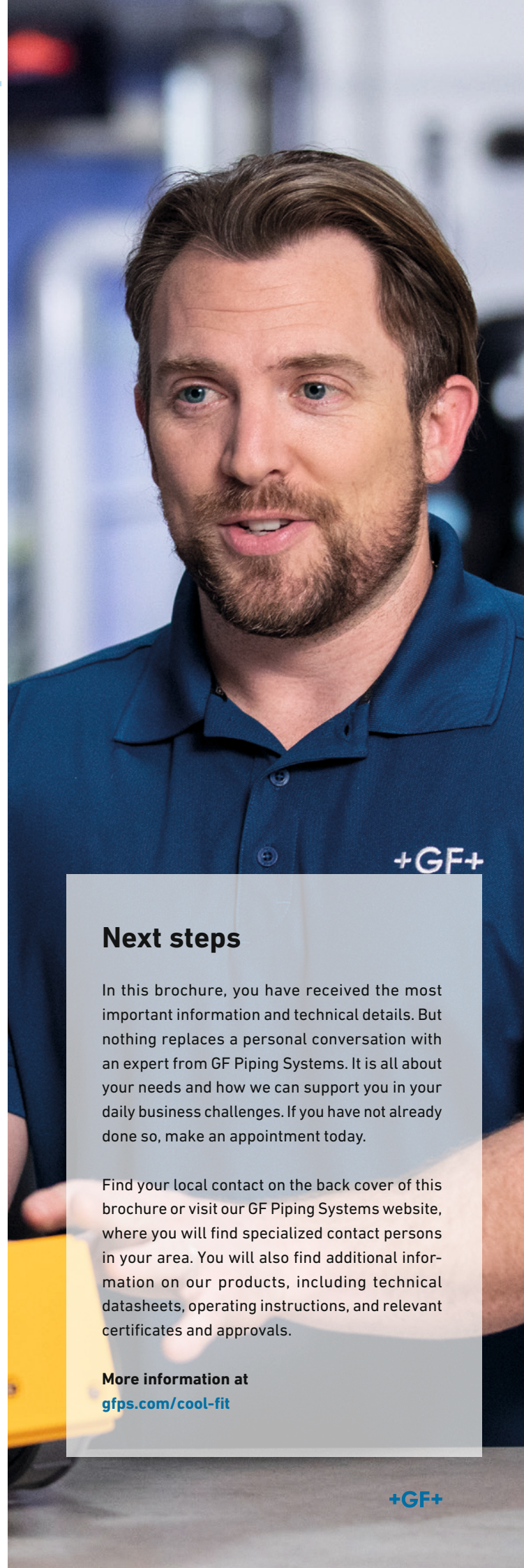
Increase the efficiency of your project with tailor-made analysis packages from GF Piping Systems. Minimize project risks by diminishing incorrect calculations or wrong material selection. Rely on GF's experience in fast project implementation and choose our durable, safe, and reliable piping systems delivery. Established knowledge, guiding you through.



Cooling Tool-Box

The cooling calculation tool from GF Piping Systems supports the dimensioning and design of the secondary circuit. The cooling calculation tool includes calculation functions for expansion / contraction, energy saving, surface temperatures, pipe dimensioning, pressure losses, CO2 footprint, and many more.

Use the online calculator
gfps.com/cooling-tools



Next steps

In this brochure, you have received the most important information and technical details. But nothing replaces a personal conversation with an expert from GF Piping Systems. It is all about your needs and how we can support you in your daily business challenges. If you have not already done so, make an appointment today.

Find your local contact on the back cover of this brochure or visit our GF Piping Systems website, where you will find specialized contact persons in your area. You will also find additional information on our products, including technical datasheets, operating instructions, and relevant certificates and approvals.

More information at
gfps.com/cool-fit

Product range

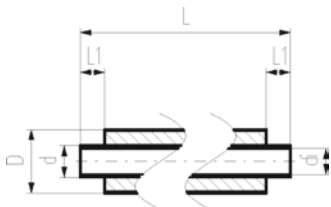
COOL-FIT 2.0



Table of contents

COOL-FIT 2.0 Pipes and Fittings	22
COOL-FIT 2.0 Transition Fittings	27
COOL-FIT 2.0 Weld-in Port	40
COOL-FIT 2.0 Flexible Hoses	42
COOL-FIT 2.0 Valves	43
COOL-FIT 2.0 Accessories	60
COOL-FIT 2.0 Tools	67
COOL-FIT 2.0 Spare parts	70
COOL-FIT 2.0 Push System Pipes and Fittings	74
COOL-FIT 2.0 Push System Valves	78
COOL-FIT 2.0 Push System Accessories	80
COOL-FIT 2.0 Push System Tools	83

COOL-FIT 2.0 Pipes and Fittings



COOL-FIT 2.0 Pipe

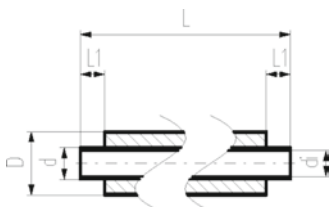
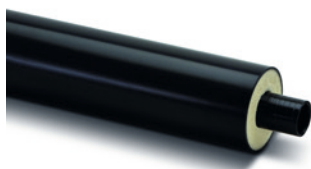
Model:

- Pre-insulated PE100 SDR11, metric
- Insulation made from GF HE foam
- Impact resistant. Color: black
- With free ends for electrofusion

Note:

bigger dimensions available via COOL-FIT 4.0 product range

d (mm)	D (mm)	DN (mm)	SDR	PN (bar)	Code	Weight (kg/m)	di (mm)	L (mm)	L1 (mm)	closest inch (inch)
32	75	25	11	16	738 174 108	1.140	26.2	5000	36	1
40	90	32	11	16	738 174 109	1.534	32.6	5000	40	1 ¼
50	90	40	11	16	738 174 110	1.722	40.8	5000	44	1 ½
63	110	50	11	16	738 174 111	2.711	51.4	5000	48	2
75	125	65	11	16	738 174 112	3.405	61.4	5000	55	2 ½
90	140	80	11	16	738 174 113	4.320	73.5	5000	62	3
110	160	100	11	16	738 174 114	5.692	90.0	5000	72	4
140	200	125	11	16	738 174 116	9.021	114.6	5000	84	5



COOL-FIT 2.0F Pipe Fire retardant

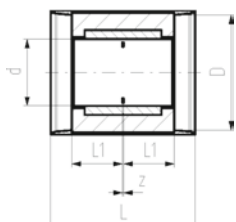
Model:

- Pre-insulated PE100 SDR11, metric
- Insulation made from GF HE foam
- Fire retardant jacket. Color: black
- With free ends for electrofusion

Note:

Bigger dimensions available via COOL-FIT 4.0F product range

d (mm)	D (mm)	DN (mm)	SDR	PN (bar)	Code	Weight (kg/m)	di (mm)	L (mm)	L1 (mm)	closest inch (inch)
32	75	25	11	16	738 174 308	1.140	26.2	5000	36	1
40	90	32	11	16	738 174 309	1.534	32.6	5000	40	1 ¼
50	90	40	11	16	738 174 310	1.722	40.8	5000	44	1 ½
63	110	50	11	16	738 174 311	2.711	51.4	5000	48	2
75	125	65	11	16	738 174 312	3.405	61.4	5000	55	2 ½
90	140	80	11	16	738 174 313	4.320	73.6	5000	62	3
110	160	100	11	16	738 174 314	5.692	90.0	5000	72	4
140	200	125	11	16	738 174 316	9.021	114.6	5000	84	5



COOL-FIT 2.0 Coupler

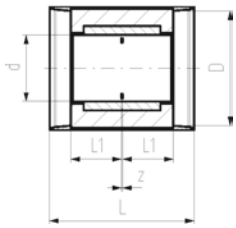
Model:

- Pre-insulated PE100 SDR11, metric
- Insulation made from GF HE foam
- Impact resistant. Color: black
- Electrofusion fitting with integrated sealing lip, for a moisture-proof and vapour tight sealing

Note:

bigger dimensions available via COOL-FIT 4.0 product range

d (mm)	D (mm)	DN (mm)	SDR	PN (bar)	Code	Weight (kg)	L (mm)	L1 (mm)	z (mm)
32	75	25	11	16	738 914 108	0.092	113	36	5
40	90	32	11	16	738 914 109	0.126	121	40	3
50	90	40	11	16	738 914 110	0.160	129	44	3



d (mm)	D (mm)	DN (mm)	SDR	PN (bar)	Code	Weight (kg)	L (mm)	L1 (mm)	z (mm)
63	110	50	11	16	738 914 111	0.237	137	48	3
75	125	65	11	16	738 914 112	0.339	152	55	3
90	140	80	11	16	738 914 113	0.476	166	62	4
110	160	100	11	16	738 914 114	0.778	188	72	4
140	200	125	11	16	738 914 116	1.097	210	84	3

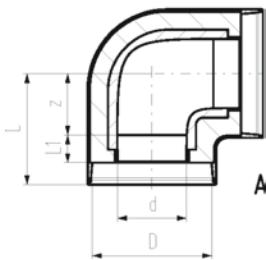


A

COOL-FIT 2.0 Elbow 90°

Model:

- Pre-insulated PE100 SDR11, metric
- Insulation made from GF HE foam
- Impact resistant. Color: black
- A: Electrofusion Fitting with integrated sealing lip, for a moisture-proof and vapour tight sealing



d (mm)	D (mm)	DN (mm)	SDR	PN (bar)	Code	Weight (kg)	L (mm)	L1 (mm)	z (mm)	Type
32	75	25	11	16	738 104 108	0.127	75	36	20	A
40	90	32	11	16	738 104 109	0.185	82	40	23	A
50	90	40	11	16	738 104 110	0.242	93	44	30	A
63	110	50	11	16	738 104 111	0.384	101	48	34	A
75	125	65	11	16	738 104 112	0.510	114	55	40	A
90	140	80	11	16	738 104 113	0.960	144	62	63	A
110	160	100	11	16	738 104 114	1.406	168	72	77	A
140	200	125	11	16	738 104 166	3.454	190	84	87	A

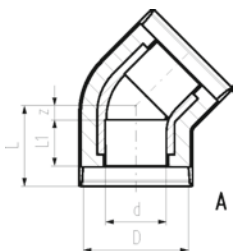


A

COOL-FIT 2.0 Elbow 45°

Model:

- Pre-insulated PE100 SDR11, metric
- Insulation made from GF HE foam
- Impact resistant. Color: black
- A: Electrofusion Fitting with integrated sealing lip, for a moisture-proof and vapour tight sealing



d (mm)	D (mm)	DN (mm)	SDR	PN (bar)	Code	Weight (kg)	L (mm)	L1 (mm)	z (mm)	Type
32	75	25	11	16	738 154 108	0.101	66	36	11	A
40	90	32	11	16	738 154 109	0.143	70	40	11	A
50	90	40	11	16	738 154 110	0.206	76	44	13	A
63	110	50	11	16	738 154 111	0.307	83	48	16	A
75	125	65	11	16	738 154 112	0.407	92	55	18	A
90	140	80	11	16	738 154 113	0.686	111	62	30	A
110	160	100	11	16	738 154 114	1.123	132	72	41	A
140	200	125	11	16	738 154 166	2.775	151	84	48	A

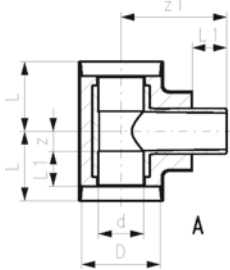


COOL-FIT 2.0 Tee 90° equal

Model:

- Pre-insulated PE100 SDR11, metric
- Insulation made from GF HE foam
- Impact resistant. Color: black
- A: Electrofusion Fitting with integrated sealing lip, for a moisture-proof and vapour tight sealing

d (mm)	D (mm)	DN (mm)	SDR	PN (bar)	Code	Weight (kg)	L (mm)	L1 (mm)	z (mm)	z1 (mm)	Type
32	75	25	11	16	738 204 108	0.154	73	36	18	98.0	A
40	90	32	11	16	738 204 109	0.230	81	40	22	112.0	A
50	90	40	11	16	738 204 110	0.306	88	44	25	125.0	A
63	110	50	11	16	738 204 111	0.492	97	48	30	147.0	A
75	125	65	11	16	738 204 112	0.673	110	55	36	140.0	A
90	140	80	11	16	738 204 113	1.022	124	62	43	161.0	A
110	160	100	11	16	738 204 114	1.751	148	72	57	184.0	A
140	200	125	11	16	738 204 166	4.390	169	84	66	257.3	A



A

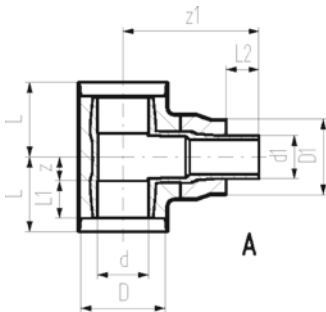


COOL-FIT 2.0 Tee 90° reduced

Model:

- Pre-insulated PE100 SDR11, metric
- Insulation made from GF HE foam
- Impact resistant. Color: black
- A: Electrofusion Fitting with integrated sealing lip, for a moisture-proof and vapour tight sealing. Branch with free pipe end.

d (mm)	d1 (mm)	D (mm)	D1 (mm)	DN (mm)	SDR	PN (bar)	Code	Weight (kg)
75	63	125	110	65	11	16	738 204 218	0.746
90	63	140	110	80	11	16	738 204 222	1.096
90	75	140	125	80	11	16	738 204 223	1.133
110	63	160	110	100	11	16	738 204 227	1.746
110	75	160	125	100	11	16	738 204 228	1.782
110	90	160	140	100	11	16	738 204 229	1.848
140	63	200	110	125	11	16	738 204 240	3.685
140	75	200	125	125	11	16	738 204 241	3.724
140	90	200	140	125	11	16	738 204 242	3.807
140	110	200	160	125	11	16	738 204 243	3.990



A

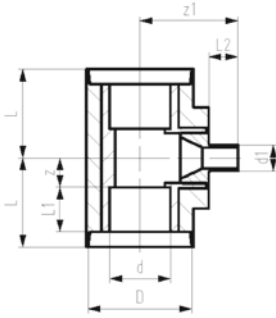
d (mm)	d1 (mm)	L (mm)	L1 (mm)	L2 (mm)	z (mm)	z1 (mm)	Type
75	63	110	55	48	36	200	A
90	63	124	62	48	42	227	A
90	75	124	62	55	42	227	A
110	63	148	72	48	57	245	A
110	75	148	72	55	57	245	A
110	90	148	72	62	57	245	A
140	63	169	84	48	66	221	A
140	75	169	84	55	66	231	A
140	90	169	84	62	66	234	A
140	110	169	84	72	66	243	A



COOL-FIT 2.0 Tee 90° reduced short

Model:

- Pre-insulated PE100 SDR11, metric
- Insulation made from GF HE foam
- Impact resistant. Color: black
- A: Electrofusion Fitting with integrated sealing lip, for a water and vapour tight sealing
- Space-optimized branch: sealing lip of Fitting Typ A that joins to the branch, needs to be cut and adhesive ring be use

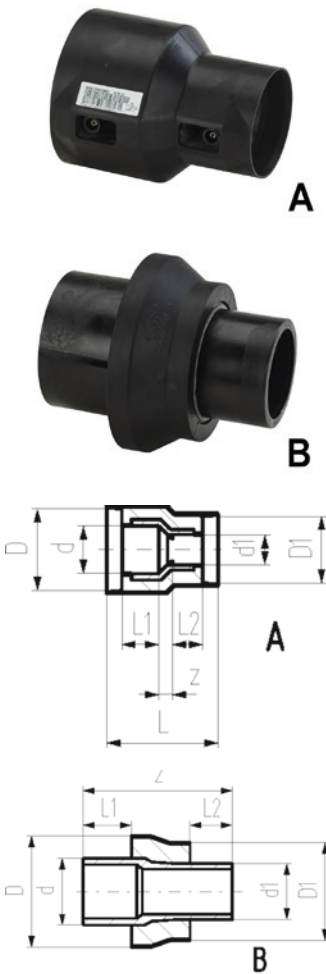


d (mm)	d1 (mm)	D (mm)	DN (mm)	SDR	PN (bar)	Code	Weight (kg)	L (mm)	L1 (mm)	L2 (mm)	z (mm)	z1 (mm)	Type
40	32	90	32	11	16	738 204 506	0.250	81	40	36	22	108	A
50	32	90	40	11	16	738 204 509	0.340	88	44	36	25	117	A
63	32	110	50	11	16	738 204 512	0.550	97	48	36	30	135	A
75	32	125	65	11	16	738 204 515	0.750	110	55	36	36	121	A
90	32	140	80	11	16	738 204 519	1.150	124	62	36	43	135	A
110	32	160	100	11	16	738 204 524	2.000	148	72	36	57	148	A

COOL-FIT 2.0 Reducer

Model:

- Pre-insulated PE100 SDR11, metric
- Insulation made from GF HE foam
- Impact resistant. Color: black
- A: Electrofusion Fitting with integrated sealing lip, for a moisture-proof and vapour tight sealing
- B: Spigot Fitting with free end (separate electrofusion fitting needed for jointing)



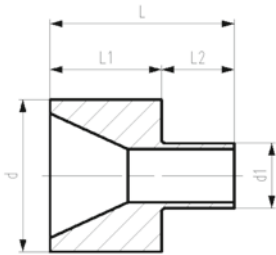
d (mm)	d1 (mm)	D (mm)	D1 (mm)	DN (mm)	SDR	PN (bar)	Code	Weight (kg)	L (mm)	L1 (mm)	L2 (mm)	z (mm)	Type
40	32	90	75	32	11	16	738 904 206	0.125	131	40	36	17	A
50	32	90	75	40	11	16	738 904 209	0.154	139	44	36	21	A
50	40	90	90	40	11	16	738 904 210	0.153	137	44	40	15	A
63	32	110	75	50	11	16	738 904 212	0.198	148	48	36	26	A
63	40	110	90	50	11	16	738 904 213	0.221	147	48	40	21	A
63	50	110	90	50	11	16	738 904 214	0.219	147	48	44	17	A
90	63	140	110	80	11	16	738 904 222	0.464	187	62	48	39	A
110	90	160	140	100	11	16	738 904 229	0.799	214	72	62	42	A
75	63	125	110	65	11	16	738 904 318	0.244		55	48	170	B
90	63	140	110	80	11	16	738 904 322	0.360		62	48	190	B
90	75	140	125	80	11	16	738 904 323	0.395		62	55	190	B
110	63	160	110	100	11	16	738 904 327	0.523		72	48	205	B
110	75	160	125	100	11	16	738 904 328	0.553		72	55	205	B
110	90	160	140	100	11	16	738 904 329	0.599		72	62	205	B
140	63	200	110	125	11	16	738 904 340	0.917		84	48	225	B
140	75	200	125	125	11	16	738 904 341	0.997		84	55	237	B
140	90	200	140	125	11	16	738 904 342	1.039		84	62	238	B
140	110	200	160	125	11	16	738 904 343	1.051		84	72	233	B



COOL-FIT 2.0 Reducer short

Model:

- Spigot fitting PE100 SDR11, metric with free end
- Space-optimized branch: sealing lip of Fitting Typ A that joins to the branch, needs to be cut and adhesive ring be use



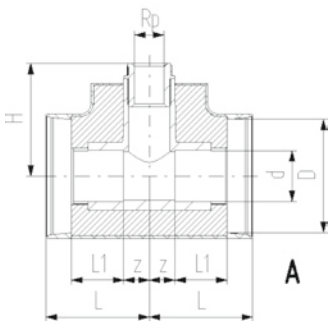
d (mm)	d1 (mm)	DN (mm)	SDR	PN (bar)	Code	Weight (kg)	L (mm)	L1 (mm)	L2 (mm)
40	32	32	11	16	738 900 506	0.030	76	40	36
50	32	40	11	16	738 900 509	0.060	80	44	36
50	40	40	11	16	738 900 510	0.060	84	44	40
63	32	50	11	16	738 900 512	0.100	84	48	36
63	40	50	11	16	738 900 513	0.100	88	48	40
63	50	50	11	16	738 900 514	0.100	92	48	44
75	32	65	11	16	738 900 515	0.170	91	55	36
90	32	80	11	16	738 900 519	0.280	98	62	36
110	32	100	11	16	738 900 524	0.500	108	72	36



COOL-FIT 2.0 Installation fitting type 313 Rp

Model:

- Pre-insulated PE100 SDR11, metric
- Insulation made from GF HE foam
- Impact resistant. Color: black
- With threaded branch for sensors (i.e temperature, pressure)
- A: Electrofusion Fitting with integrated sealing lip, for a moisture-proof and vapour tight sealing



d (mm)	D (mm)	Thread Size (inch)	DN (mm)	SDR	PN (bar)	Code	Weight (kg)	H (mm)	L (mm)	L1 (mm)	z (mm)	Type
32	75	Rp ½	25	11	16	738 313 408	0.138	75	73	36	16	A
40	90	Rp ½	32	11	16	738 313 409	0.216	85	81	40	21	A
40	90	Rp ¾	32	11	16	738 313 459	0.216	88	81	40	21	A
50	90	Rp ½	40	11	16	738 313 410	0.308	94	88	44	24	A
50	90	Rp ¾	40	11	16	738 313 460	0.307	97	88	44	24	A
63	110	Rp ½	50	11	16	738 313 411	0.493	113	97	48	29	A
63	110	Rp ¾	50	11	16	738 313 461	0.492	116	97	48	29	A
75	125	Rp ½	65	11	16	738 313 412	0.678	99	110	55	35	A
75	125	Rp ¾	65	11	16	738 313 462	0.677	102	110	55	35	A
90	140	Rp ½	80	11	16	738 313 413	1.025	113	123	62	42	A
90	140	Rp ¾	80	11	16	738 313 463	1.023	116	123	62	42	A
110	160	Rp ½	100	11	16	738 313 414	1.765	128	148	72	56	A
110	160	Rp ¾	100	11	16	738 313 464	1.763	131	148	72	56	A
140	200	Rp ½	125	11	16	738 313 436	3.747	190	169	84	66	A
140	200	Rp ¾	125	11	16	738 313 486	3.747	190	169	84	66	A

COOL-FIT 2.0 Transition Fittings

COOL-FIT 2.0 Transition Tee90° PE/brass With female thread Rp

Model:

- Pre-insulated, PE100, SDR11, metric
- Brass CuZn40Pb2 with female thread Rp
- Insulation made from GF HE foam
- Impact resistant. Color: black
- A: Electrofusion Fitting with integrated sealing lip, for a water and vapour tight sealing
- B: Spigot Fitting with free end (separate electrofusion fitting needed for jointing)

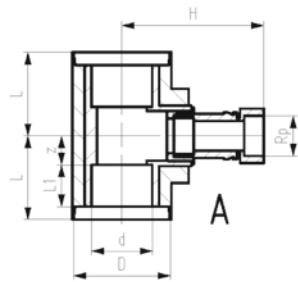


A

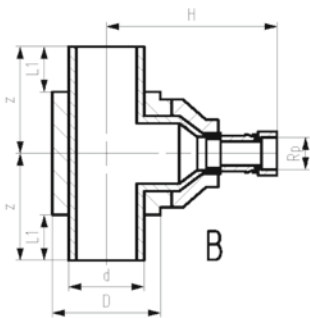


B

d (mm)	D (mm)	Thread Size (inch)	DN (mm)	SDR	PN (bar)	Code	Weight (kg)	L (mm)	L1 (mm)	H (mm)	z (mm)	Type
63	110	Rp 2	50	11	16	738 954 061	1.700	97	48	212	29	A
75	125	Rp 2	65	11	16	738 954 062	1.900	110	55	193	36	A
90	140	Rp 2	80	11	16	738 954 063	2.300	124	62	210	43	A
110	160	Rp 2	100	11	16	738 954 064	3.100	148	72	223	57	A
140	200	Rp 2	125	11	16	738 954 066	4.700		84	316	447	B



A



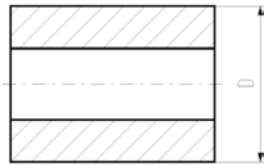
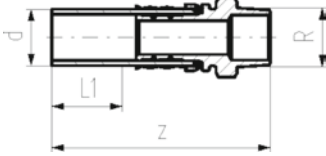
B



COOL-FIT 2.0 Adaptor fitting PE/stainless steel With male thread R

Model:

- Spigot fitting PE100 SDR11, metric with free end
- Stainless steel 1.4404 / 316L with male thread R
- Gasket: O-ring EPDM
- Including Insulation made from NBR foam



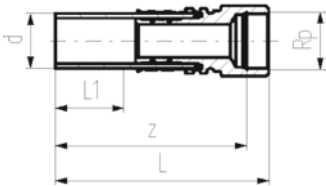
d (mm)	D (mm)	Thread	Size (inch)	DN (mm)	SDR	PN (bar)	Code	Weight (kg)	L1 (mm)	z (mm)
32	70	R	½	25	11	16	738 944 508	0.194	36	130
32	70	R	¾	25	11	16	738 944 518	0.202	36	134
32	70	R	1	25	11	16	738 944 528	0.211	36	134
40	78	R	1 ¼	32	11	16	738 944 509	0.595	40	156
50	88	R	1 ½	40	11	16	738 944 510	0.954	44	168
63	101	R	2	50	11	16	738 944 511	1.381	48	179



COOL-FIT 2.0 Adaptor fitting PE/stainless steel With female thread Rp

Model:

- Spigot fitting PE100 SDR11, metric with free end
- Stainless steel 1.4404 / 316L with femal thread Rp
- Gasket: O-ring EPDM
- Including Insulation made from NBR foam



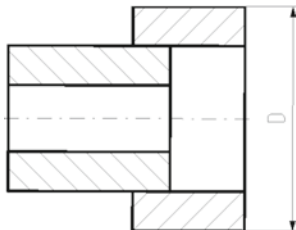
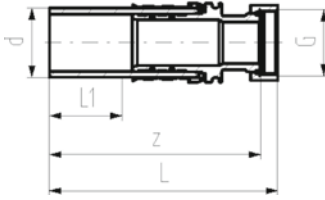
d (mm)	D (mm)	Thread	Size (inch)	DN (mm)	SDR	PN (bar)	Code	Weight (kg)	L (mm)	L1 (mm)	z (mm)
32	70	Rp	½	25	11	16	738 944 008	0.201	132	36	118
32	70	Rp	¾	25	11	16	738 944 018	0.226	132	36	116
32	70	Rp	1	25	11	16	738 944 028	0.251	132	36	115
40	78	Rp	1 ¼	32	11	16	738 944 009	0.626	157	40	141
50	88	Rp	1 ½	40	11	16	738 944 010	0.670	150	44	128
63	101	Rp	2	50	11	16	738 944 011	1.170	164	48	140



COOL-FIT 2.0 Adaptor fitting PE/stainless steel With loose union nut G

Model:

- Spigot fitting PE100 SDR11, metric with free end
- Stainless steel 1.4404 / 316L with female thread G
- Including flat seal EPDM
- Including Insulation made from NBR foam



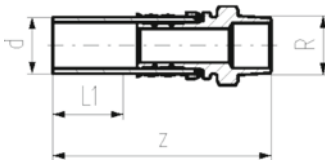
d (mm)	D (mm)	Thread	Size (inch)	DN (mm)	SDR	PN (bar)	Code	Weight (kg)	L (mm)	L1 (mm)	z (mm)
32	70	G	½	25	11	16	738 944 308	0.204	135	36	126
32	70	G	¾	25	11	16	738 944 318	0.219	135	36	129
32	70	G	1	25	11	16	738 944 328	0.317	135	36	129
40	78	G	1 ¼	32	11	16	738 944 309	0.538	155	40	148
40	116	G	1 ½	32	11	16	738 944 319	0.615	157	40	148
50	88	G	1 ½	40	11	16	738 944 310	0.758	164	44	154
63	101	G	2	50	11	16	738 944 311	1.237	186	48	170



COOL-FIT 2.0 Adaptor fitting PE/brass With male thread R

Model:

- Spigot fitting PE100 SDR11, metric with free end
- Brass CuZn40Pb2 with male thread R
- Gasket: O-ring EPDM
- Including Insulation made from NBR foam



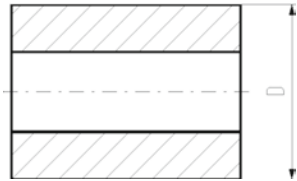
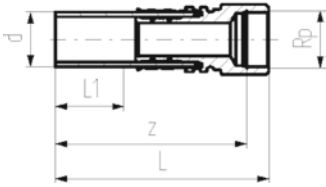
d (mm)	D (mm)	Thread	Size (inch)	DN (mm)	SDR	PN (bar)	Code	Weight (kg)	L1 (mm)	z (mm)
32	70	R	½	25	11	16	738 954 508	0.203	36	130
32	70	R	¾	25	11	16	738 954 518	0.211	36	134
32	70	R	1	25	11	16	738 954 528	0.221	36	134
40	78	R	1 ¼	32	11	16	738 954 509	0.631	40	156
50	88	R	1 ½	40	11	16	738 954 510	1.013	44	168
63	101	R	2	50	11	16	738 954 511	1.467	48	179



COOL-FIT 2.0 Adaptor fitting PE/brass With female thread Rp

Model:

- Spigot fitting PE100 SDR11, metric with free end
- Brass CuZn40Pb2 with female tread Rp
- Gasket: O-ring EPDM
- Including Insulation made from NBR foam



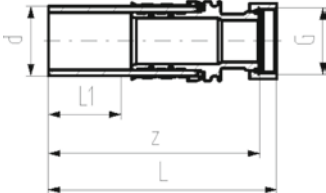
d (mm)	D (mm)	Thread	Size (inch)	DN (mm)	SDR	PN (bar)	Code	Weight (kg)	L (mm)	L1 (mm)	z (mm)
32	70	Rp	½	25	11	16	738 954 008	0.210	132	36	118
32	70	Rp	¾	25	11	16	738 954 018	0.237	132	36	116
32	70	Rp	1	25	11	16	738 954 028	0.264	132	36	115
40	78	Rp	1 ¼	32	11	16	738 954 009	0.667	157	40	141
50	88	Rp	1 ½	40	11	16	738 954 010	0.713	150	44	128
63	101	Rp	2	50	11	16	738 954 011	1.246	164	48	140



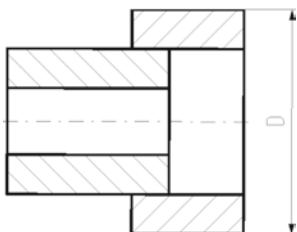
COOL-FIT 2.0 Adaptor fitting PE/brass With loose union nut G

Model:

- Spigot fitting PE100 SDR11, metric with free end
- Brass CuZn40Pb2 with female thread G
- Including flat seal EPDM
- Including Insulation made from NBR foam



d (mm)	D (mm)	Thread	Size (inch)	DN (mm)	SDR	PN (bar)	Code	Weight (kg)	L (mm)	L1 (mm)	z (mm)
32	70	G	¾	25	11	16	738 954 318	0.224	135	36	126
32	70	G	1	25	11	16	738 954 328	0.263	135	36	129
32	108	G	1 ¼	25	11	16	738 954 338	0.335	137	36	129
40	78	G	1 ¼	32	11	16	738 954 309	0.569	155	40	148
40	116	G	1 ½	32	11	16	738 954 319	0.650	157	40	148
50	88	G	1 ½	40	11	16	738 954 310	0.801	164	44	154
63	101	G	2	50	11	16	738 954 311	1.310	186	48	170

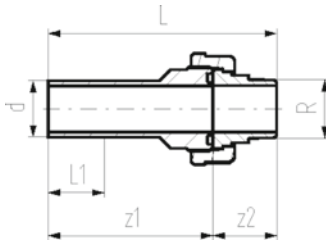




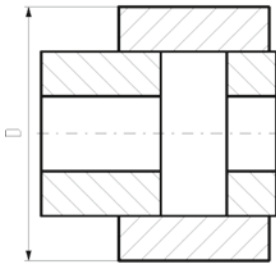
COOL-FIT 2.0 Adaptor union PE/stainless steel With male thread R

Model:

- Union bush: Spigot fitting PE100 SDR11, metric with free end
- Union End: Stainless steel 1.4404 / 316L with male thread R
- Gasket: O-ring EPDM No. 748 410 008-011
- Union Nut: PEGF25
- Including Insulation made from NBR foam



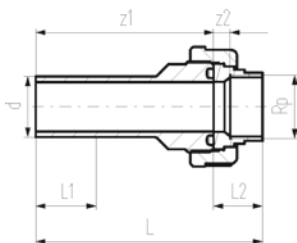
d (mm)	D (mm)	Thread	Size (inch)	DN (mm)	SDR	PN (bar)	Code	Weight (kg)	L (mm)	L1 (mm)	z1 (mm)	z2 (mm)
32	108	R	1	25	11	16	738 544 708	0.310	147	36	107	40
40	116	R	1 ¼	32	11	16	738 544 709	0.538	163	40	117	46
50	126	R	1 ½	40	11	16	738 544 710	0.660	172	44	124	48
63	139	R	2	50	11	16	738 544 711	1.073	191	48	136	55



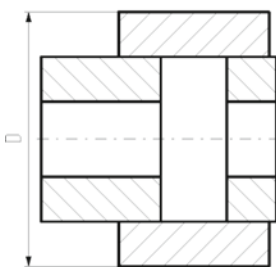
COOL-FIT 2.0 Adaptor union PE/stainless steel With female thread Rp

Model:

- Union bush: Spigot fitting PE100 SDR11, metric with free end
- Union End: Stainless steel 1.4404 / 316L with female thread Rp
- Gasket: O-ring EPDM No. 748 410 008-011
- Union Nut: PEGF25
- Including Insulation made from NBR foam



d (mm)	D (mm)	Thread	Size (inch)	DN (mm)	SDR	PN (bar)	Code	Weight (kg)	L (mm)	L1 (mm)	L2 (mm)	z1 (mm)	z2 (mm)
32	108	Rp	1	25	11	16	738 544 208	0.270	136	36	29	107	10
40	116	Rp	1 ¼	32	11	16	738 544 209	0.433	150	40	33	118	11
50	126	Rp	1 ½	40	11	16	738 544 210	0.587	158	44	34	124	13
63	139	Rp	2	50	11	16	738 544 211	0.883	175	48	39	136	14

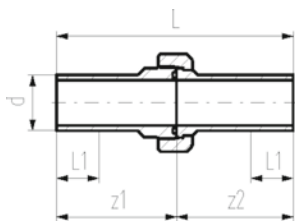




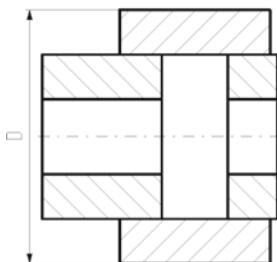
COOL-FIT 2.0 Union PE/PE

Model:

- Union bush: Spigot fitting PE100 SDR11, metric with free end
- Union End: Spigot fitting PE100 SDR11, metric with free end
- Gasket: O-ring EPDM No. 748 410 008-014
- Union Nut: PEGF25
- Including Insulation made from NBR foam



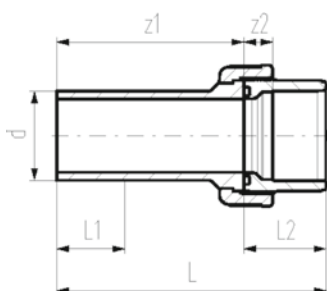
d (mm)	D (mm)	DN (mm)	SDR	PN (bar)	Code	L (mm)	L1 (mm)	z1 (mm)	z2 (mm)
32	108	25	11	16	738 514 608	211	36	107	104
40	116	32	11	16	738 514 609	234	40	118	117
50	126	40	11	16	738 514 610	247	44	124	123
63	139	50	11	16	738 514 611	268	48	136	132
75	151	65	11	10	738 514 612	303	55	154	149
90	166	80	11	10	738 514 613	293	62	149	144
110	186	100	11	10	738 514 614	321	72	162	159



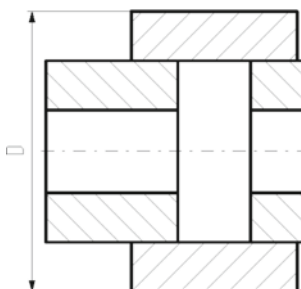
COOL-FIT 2.0 Adaptor Union PE/ABS

Model:

- Union bush: ABS Solvent cement socket
- Union End: Spigot fitting PE100 SDR11, metric with free end
- Gasket: O-ring EPDM No. 748 410 008-014
- Union Nut: ABS
- Including Insulation made from NBR foam



d (mm)	D (mm)	DN (mm)	SDR	PN (bar)	Code	Weight (kg)	L (mm)	L1 (mm)	L2 (mm)	z1 (mm)	z2 (mm)
32	108	25	11	10	738 514 708	0.117	137	36	33	104	11
40	116	32	11	10	738 514 709	0.196	156	40	39	117	13
50	126	40	11	10	738 514 710	0.268	169	44	46	123	15
63	139	50	11	10	738 514 711	0.427	190	48	58	132	21
75	151	65	11	10	738 514 712	0.730	211	55	62	149	18
90	166	80	11	10	738 514 713	0.974	215	62	69	146	19
110	186	100	11	10	738 514 714	1.478	235	72	72	163	11



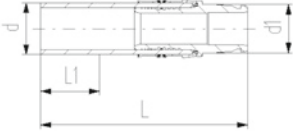
COOL-FIT 2.0 Adaptor fitting PE/iFIT



Model:

- Spigot fitting PE100 SDR11, metric with free end
- iFIT module stainless steel 1.4404 / 316L
- Including insulation half shells

d	D	d1	DN	SDR	PN	Code	Weight	L	L1	L2
(mm)	(mm)	(mm)	(mm)		(bar)		(kg)	(mm)	(mm)	(mm)
32	70	25-32	25	11	10	738 944 108	0.229	132	36	80



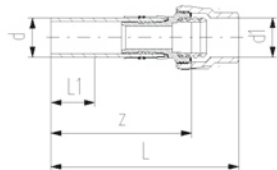
COOL-FIT 2.0 Adaptor fitting PE/Sanipex MT



Model:

- Spigot fitting PE100 SDR11, metric with free end
- Sanipex MT adaptor brass CuZn40Pb2
- Including Insulation made from NBR foam

d	D	DN	PN	SDR	d1	Code	Weight	L	L1	L2	z
(mm)	(mm)	(mm)	(bar)		(mm)		(kg)	(mm)	(mm)	(mm)	(mm)
32	86	25	10	11	32	738 954 118	0.441	174	36	101	135

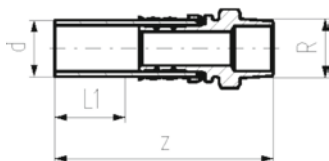


**COOL-FIT 2.0/4.0 Adaptor fitting PE/stainless steel
With male thread R**



Model:

- Spigot fitting PE100 SDR11, metric with free end
- Stainless steel 1.4404 / 316L with male thread R
- Gasket: O-ring EPDM



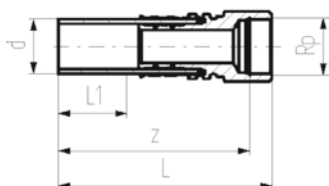
d (mm)	Thread	Size (inch)	DN (mm)	SDR	PN (bar)	Code	Weight (kg)	L1 (mm)	z (mm)
32	R	½	25	11	16	738 940 508	0.179	36	130
32	R	¾	25	11	16	738 940 518	0.187	36	134
32	R	1	25	11	16	738 940 528	0.196	36	134
40	R	1 ¼	32	11	16	738 940 509	0.572	40	156
50	R	1 ½	40	11	16	738 940 510	0.927	44	168
63	R	2	50	11	16	738 940 511	1.347	48	179

**COOL-FIT 2.0/4.0 Adaptor fitting PE/stainless steel
With female thread Rp**



Model:

- Spigot fitting PE100 SDR11, metric with free end
- Stainless steel 1.4404 / 316L with femal thread Rp
- Gasket: O-ring EPDM



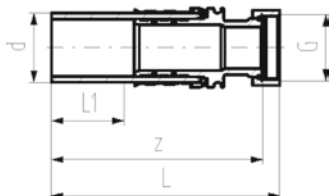
d (mm)	Thread	Size (inch)	DN (mm)	SDR	PN (bar)	Code	Weight (kg)	L (mm)	L1 (mm)	z (mm)
32	Rp	½	25	11	16	738 940 008	0.183	132	36	118
32	Rp	¾	25	11	16	738 940 018	0.208	132	36	116
32	Rp	1	25	11	16	738 940 028	0.233	132	36	115
40	Rp	1 ¼	32	11	16	738 940 009	0.600	157	40	141
50	Rp	1 ½	40	11	16	738 940 010	0.641	150	44	128
63	Rp	2	50	11	16	738 940 011	1.133	164	48	140

**COOL-FIT 2.0/4.0 Adaptor fitting PE/stainless steel
With loose union nut G**



Model:

- Spigot fitting PE100 SDR11, metric with free end
- Stainless steel 1.4404 / 316L with loose union nut G
- Including flat seal EPDM



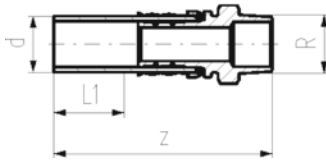
d (mm)	Thread	Size (inch)	DN (mm)	SDR	PN (bar)	Code	Weight (kg)	L (mm)	L1 (mm)	z (mm)
32	G	½	25	11	16	738 940 308	0.186	133	36	126
32	G	¾	25	11	16	738 940 318	0.201	135	36	129
32	G	1	25	11	16	738 940 328	0.232	135	36	129
40	G	1 ¼	32	11	16	738 940 309	0.512	155	40	148
40	G	1 ½	32	11	16	738 940 319	0.572	157	40	148
50	G	1 ½	40	11	16	738 940 310	0.726	164	44	154
63	G	2	50	11	16	738 940 311	1.195	186	48	170

**COOL-FIT 2.0/4.0 Adaptor fitting PE/brass
With male thread R**



Model:

- Spigot fitting PE100 SDR11, metric with free end
- Brass CuZn40Pb2 with male thread R
- Gasket: O-ring EPDM



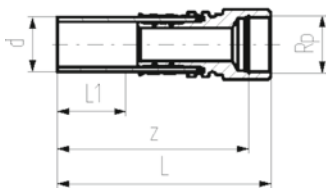
d (mm)	Thread	Size (inch)	DN (mm)	SDR	PN (bar)	Code	Weight (kg)	L1 (mm)	z (mm)
32	R	½	25	11	16	738 950 508	0.188	36	130
32	R	¾	25	11	16	738 950 518	0.196	36	134
32	R	1	25	11	16	738 950 528	0.206	36	134
40	R	1 ¼	32	11	16	738 950 519	0.608	40	156
50	R	1 ½	40	11	16	738 950 510	0.986	44	168
63	R	2	50	11	16	738 950 511	1.433	48	179

**COOL-FIT 2.0/4.0 Adaptor fitting PE/brass
With female thread Rp**



Model:

- Spigot fitting PE100 SDR11, metric with free end
- Brass CuZn40Pb2 with female thread Rp
- Gasket: O-ring EPDM



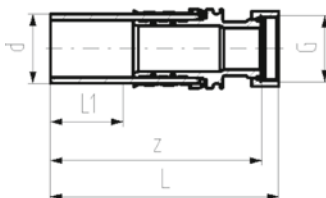
d (mm)	Thread	Size (inch)	DN (mm)	SDR	PN (bar)	Code	Weight (kg)	L (mm)	L1 (mm)	z (mm)
32	Rp	½	25	11	16	738 950 008	0.192	132	36	118
32	Rp	¾	25	11	16	738 950 018	0.219	132	36	116
32	Rp	1	25	11	16	738 950 028	0.246	132	36	115
40	Rp	1 ¼	32	11	16	738 950 019	0.641	157	40	141
50	Rp	1 ½	40	11	16	738 950 010	0.684	150	44	128
63	Rp	2	50	11	16	738 950 011	1.209	164	48	140

**COOL-FIT 2.0/4.0 Adaptor fitting PE/brass
With loose union nut G**



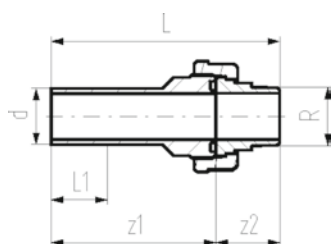
Model:

- Spigot fitting PE100 SDR11, metric with free end
- Brass CuZn40Pb2 with loose union nut G
- Including flat seal EPDM



d (mm)	Thread	Size (inch)	DN (mm)	SDR	PN (bar)	Code	Weight (kg)	L (mm)	L1 (mm)	z (mm)
32	G	¾	25	11	16	738 950 318	0.206	135	36	129
32	G	1	25	11	16	738 950 328	0.244	135	36	129
40	G	1 ¼	32	11	16	738 950 309	0.543	155	40	148
40	G	1 ½	32	11	16	738 950 319	0.607	157	40	148
50	G	1 ½	40	11	16	738 950 310	0.769	164	44	154
63	G	2	50	11	16	738 950 311	1.268	186	48	170

**COOL-FIT 2.0/4.0 Adaptor union PE/stainless steel
With male thread R**

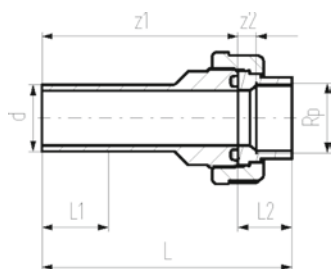


Model:

- Union bush: Spigot fitting PE100 SDR11, metric with free end
- Union End: Stainless steel 1.4404 / 316L with male thread R
- Gasket: O-ring EPDM No. 748 410 008-011
- Union Nut: PEGF25

d (mm)	Thread (inch)	Size (mm)	DN	SDR	PN	Code	Weight (kg)	L (mm)	L1 (mm)	z1 (mm)	z2 (mm)
32	R	1	25	11	16	738 540 708	0.276	147	36	107	40
40	R	1 ¼	32	11	16	738 540 709	0.495	163	40	117	46
50	R	1 ½	40	11	16	738 540 710	0.606	172	44	124	48
63	R	2	50	11	16	738 540 711	1.000	191	48	136	55

**COOL-FIT 2.0/4.0 Adaptor union PE/stainless steel
With female thread Rp**

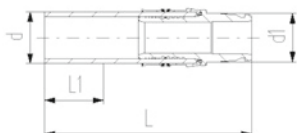


Model:

- Union bush: Spigot fitting PE100 SDR11, metric with free end
- Union End: Stainless steel 1.4404 / 316L with female thread Rp
- Gasket: O-ring EPDM No. 748 410 008-011
- Union Nut: PEGF25

d (mm)	Thread (inch)	Size (mm)	DN	SDR	PN	Code	Weight (kg)	L (mm)	L1 (mm)	L2 (mm)	z1 (mm)	z2 (mm)
32	Rp	1	25	11	16	738 540 208	0.234	136.0	36	29	107.0	10.0
40	Rp	1 ¼	32	11	16	738 540 209	0.387	150.0	40	33	117.5	11.0
50	Rp	1 ½	40	11	16	738 540 210	0.530	158.5	44	34	124.5	12.5
63	Rp	2	50	11	16	738 540 211	0.807	175.0	48	39	136.0	13.5

COOL-FIT 2.0/4.0 Adaptor Fitting PE/iFIT



Model:

- Spigot fitting PE100 SDR11, metric with free end
- iFIT module stainless steel 1.4404 / 316L

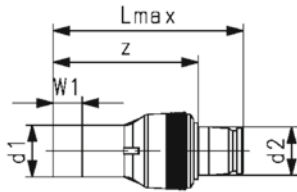
d (mm)	DN (mm)	SDR	PN (bar)	Code	Weight (kg)	L (mm)	L1 (mm)	L2 (mm)
32	25	11	10	738 940 108	0.211	132	36	80



COOL-FIT 2.0/4.0 Adaptor fitting PE/iFIT

Model:

- Spigot fitting PE100 SDR11, metric with free end
- Push system module brass

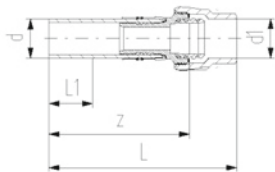


d1 (mm)	d2 (mm)	DN (mm)	SDR	PN (bar)	Code	SP	Weight (kg)	Lmax (mm)	W1 (mm)	z (mm)
32	25/32	25	11	16	738 950 058	1	0.219	115	36	87

COOL-FIT 2.0/4.0 Adaptor fitting PE/Sanipex MT

Model:

- Spigot fitting PE100 SDR11, metric with free end
- Sanipex MT adaptor brass CuZn40Pb2

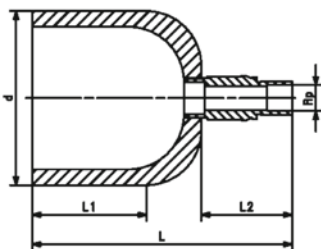


d (mm)	DN (mm)	SDR	PN (bar)	Code	Weight (kg)	d1 (mm)	L (mm)	L1 (mm)	L2 (mm)	z (mm)
32	25	11	10	738 950 118	0.412	32	174	36	101	135

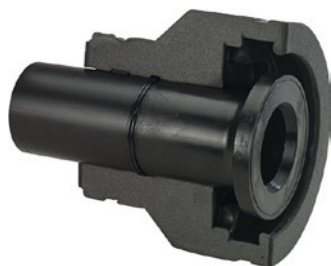
COOL-FIT 2.0/4.0 Transition cap PE/brass With female thread Rp

Model:

- Spigot fitting PE100 SDR11, metric with free end
- Brass CuZn40Pb2 with female tread Rp
- Gasket: O-ring EPDM



d (mm)	Thread Size (inch)	DN (mm)	SDR	PN (bar)	Code	Weight (kg)	L (mm)	L1 (mm)	L2 (mm)
32	Rp ½	25	11	16	738 960 008	0.200	107	36	69
40	Rp ½	32	11	16	738 960 009	0.210	113	40	73
50	Rp ½	40	11	16	738 960 010	0.250	117	44	73
63	Rp ½	50	11	16	738 960 011	0.300	121	48	73
75	Rp ½	65	11	16	738 960 012	0.400	128	55	73
90	Rp ½	80	11	16	738 960 013	0.476	135	62	73
110	Rp ½	100	11	16	738 960 014	0.695	145	72	73
140	Rp ½	125	11	16	738 960 016	0.954	209	84	73



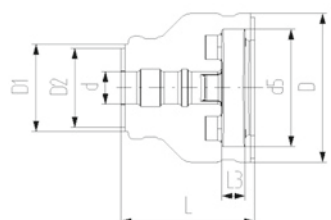
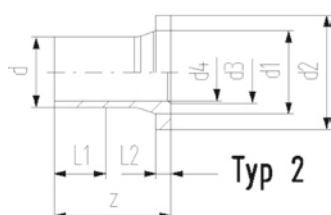
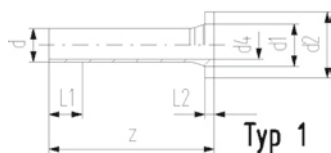
COOL-FIT 2.0/4.0 Flange adaptor

Model:

- PE100 SDR11, metric
- Suitable for flange connections to metric and/or ANSI/ASME B16.5
- Type 1 without chamfer, Type 2 with chamfer
- Profile flange gasket EPDM: metric No. 48 44 07, ANSI No. 48 44 05.
- Separate Fittings type A needed for joining

Note:

Backing ring and gasket not included



d (mm)	DN (mm)	SDR	PN	Type	Code	Weight (kg)
32	25	11	16	1	738 710 008	0.320
40	32	11	16	1	738 710 009	0.480
50	40	11	16	1	738 710 010	0.620
63	50	11	16	1	738 710 011	0.910
75	65	11	16	2	738 710 012	1.220
90	80	11	16	2	738 710 013	1.650
110	100	11	16	2	738 710 014	2.390
140	125	11	16	2	738 710 016	3.660

d (mm)	D (mm)	d1 (mm)	D1 (mm)	d2 (mm)	D2 (mm)	d3 (mm)	d4 (mm)	d5 (mm)	L (mm)	L1 (mm)	L2 (mm)	L3 (mm)	Standard	z (mm)
32	135	40	90	68			26	121	162	36	10	26	Metric	190
40	170	50	110	78	90		32	146	165	40	11	28	Metric	197
50	180	61	110	88	90		40	156	178	44	12	30	Metric	214
63	200	75	125	102	110		51	171	230	48	14	32	Metric, ANSI	270
75	220	89	140	122	125	66	61	191	232	55	16	34	Metric, ANSI	279
90	240	105	160	138	140	78	73	206	245	62	17	35	Metric	299
110	270	125	180	158	160	100	90	235	254	72	18	36	Metric, ANSI	320
140	300	155	225	188	200	127	127	256	299	84	25	38	Metric, ANSI	383



Flanges PP-Steel

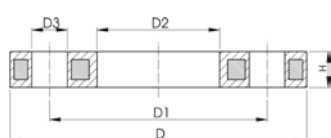
Model:

- Material: PP (30% glass-fibre reinforced) with steel ring
- Metric: ISO 7005, EN 1092, ISO 9624
- ASME: ANSI/ASME B 16.5 class 150, ASTM D4024, BS 1560, BS EN 1759
- Special flange adapter ANSI for d25 - d50 and d90 required

AL: number of holes

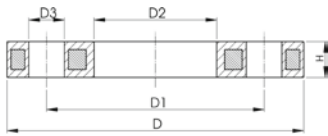
* FM 1613 approved - 15 bar

** Profiled loose flange



d (mm)	DN (mm)	D (mm)	PN (bar)	Standard	Bolt / circle	Design	Code	Weight (kg)
32	25	115	16	Metric	PN10	Butt/Socket	727 700 208	0.429
40	32	140	16	Metric	PN10	Butt/Socket	727 700 209	0.621
50	40	150	16	Metric	PN10	Butt/Socket	727 700 210	0.722
63	50	165	16	Metric	PN10	Butt/Socket	727 700 211	0.900
75	65	185	16	Metric	PN10	Butt/Socket	727 700 212	1.110
*	90	200	16	Metric	PN10	Butt	724 700 313	1.390
	90	200	16	Metric	PN10	Butt	727 700 313	1.390
*	110	223	16	Metric	PN10	Butt	724 700 314	1.407
	110	220	16	Metric	PN10	Butt	727 700 314	1.407
*	140	250	16	Metric	PN10	Butt	724 700 316	2.318
	140	250	16	Metric	PN10	Butt	727 700 716	2.318

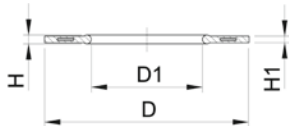
d (mm)	D1 (mm)	D2 (mm)	D3 (mm)	H max. (mm)	AL	SC
32	85	42	14	16	4	M12
40	100	51	18	16	4	M16
50	110	62	18	20	4	M16



	d (mm)	D1 (mm)	D2 (mm)	D3 (mm)	H max. (mm)	AL	SC
	63	125	78	18	20	4	M16
	75	145	92	18	20	4	M16
*	90	160	108	18	20	8	M16
	90	160	108	18	20	8	M16
*	110	180	128	18	20	8	M16
	110	180	128	18	20	8	M16
*	140	210	158	18	24	8	M16
	140	210	158	18	24	8	M16



Design 0710 - 01000



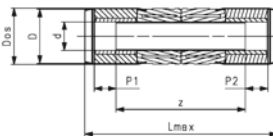
Profile Flange Gasket EPDM/FKM metric

Model:

- For all metric GF Flange Adaptors
- Hardness: 70° Shore EPDM, 75° Shore FKM
- EPDM: approved acc. to DVGW Water W 270, KTW recommendation
- Centering on the inner diameter of the screw crown
- material steel insert: carbon steel
- Rubber-steel body combined with rubber profile cord ring up to d630
- Rubber-steel body ideal for big dimensions (d710 - d1000)

di FA are the suitable inner diameters of flanges adaptors

d (mm)	DN (mm)	PN (bar)	EPDM Code	D (mm)	D1 (mm)	di FA (mm)	H (mm)	H1 (mm)
32	25	16	748 440 708	71	28	18 - 28	4	3
40	32	16	748 440 709	82	40	30 - 40	4	3
50	40	16	748 440 710	92	46	36 - 46	4	3
63	50	16	748 440 711	107	58	48 - 58	5	4
75	65	16	748 440 712	127	69	59 - 69	5	4
90	80	16	748 440 713	142	84	73 - 84	5	4
110	100	16	748 440 714	162	104	94 - 104	6	5
140	125	16	748 440 716	192	137	127 - 137	6	5



COOL-FIT 2.0 Sliding coupler kit

Model:

- Pre-insulated PE100 SDR11, metric
- Insulation made from GF HE foam
- Outer jacket impact resistant. Color: black
- Integrated sealing lip, for a moisture-proof and vapour tight sealing
- Including two couplers, pipe section and four insulation half shells

d (mm)	D (mm)	DN (mm)	SDR	PN (bar)	Code	Weight (kg)	Dos (mm)	Lmax (mm)	P1 (mm)	P2 (mm)	z (mm)
32	75	25	11	16	738 914 508	0.311	82	376	36	36	268
40	90	32	11	16	738 914 509	0.446	97	402	40	40	284
50	90	40	11	16	738 914 510	0.589	97	422	44	44	296
63	110	50	11	16	738 914 511	0.907	117	452	48	48	318
75	125	65	11	16	738 914 512	1.309	133	493	55	55	344
90	140	80	11	16	738 914 513	1.890	148	532	62	62	370
110	160	100	11	16	738 914 514	3.078	168	604	72	72	420
140	200	125	11	16	738 914 516	4.851	208	673	84	84	466

COOL-FIT 2.0 Weld-in Port



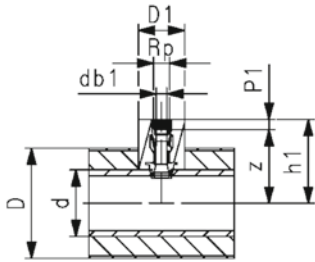
COOL-FIT 2.0 Weld-in port PE/brass With female thread Rp

Model:

- Material: PE100, brass with low lead content, dezincification resistant
- With Weld-in port cone (PE100) and female thread Rp (brass) for the installation of sensors, instruments, venting and draining
- Gasket: O-ring EPDM
- Including insulation made from EPDM foam

Note:

For pipes COOL-FIT 2.0, COOL-FIT 2.0F, COOL-FIT 4.0 and COOL-FIT 4.0F of the dimension d63-d225



Size (inch)	Thread	PN (bar)	Code	Weight (kg)	d (mm)	db1 (mm)	D1 (mm)	h1 (mm)	P1 (mm)	z (mm)
½	Rp	16	738 114 106	0.140	d63 - d225	11.8	73	85+d/2	15	70 + d/2
¾	Rp	16	738 114 107	0.183	d63 - d225	17.4	73	85+d/2	16	69 + d/2
1	Rp	16	738 114 108	0.247	d63 - d225	23.1	73	86+d/2	19	67 + d/2



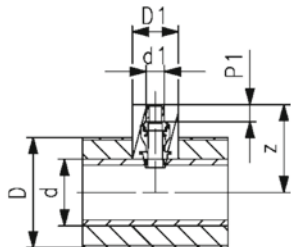
COOL-FIT 2.0 Weld-in port PE/iFIT

Model:

- Material: PE100, brass
- With Weld-in port cone (PE100) and iFIT module (brass) for the transition to COOL-FIT Push System or iFIT
- Gasket: O-ring EPDM
- Including insulation made from EPDM foam

Note:

For pipes COOL-FIT 2.0, COOL-FIT 2.0F, COOL-FIT 4.0 and COOL-FIT 4.0F of the dimension d63-d225



d1 (mm)	PN (bar)	Code	Weight (kg)	d (mm)	D1 (mm)	P1 (mm)	z (mm)
16/20	16	738 114 406	0.143	d63 - d225	73	20	84 + d/2



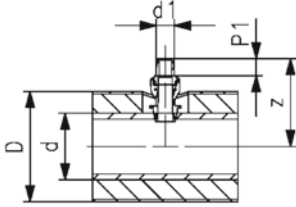
COOL-FIT 2.0/4.0 Weld-in port PE/iFIT

Model:

- Material: PE100, brass
- With Weld-in port cone (PE100) and iFIT module (brass) for the transition to COOL-FIT Push System or iFIT
- Gasket: O-ring EPDM

Note:

For pipes COOL-FIT 2.0, COOL-FIT 2.0F, COOL-FIT 4.0 and COOL-FIT 4.0F of the dimension d63-d225



d1 (mm)	PN (bar)	Code	Weight (kg)	d (mm)	P1 (mm)	z (mm)
25/32	16	738 110 407	0.228	d63 - d225	28	92 + d/2



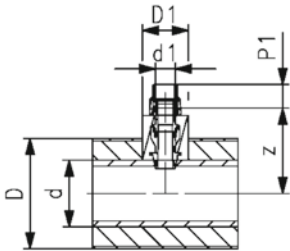
COOL-FIT 2.0 Weld-in port PE/Sanipex MT

Model:

- Material: PE100, brass with low lead content, dezincification resistant
- With Weld-in port cone (PE100) and Sanipex MT adaptor (brass) for the transition to Sanipex MT
- Gasket: O-ring EPDM
- Including insulation made from EPDM foam

Note:

For pipes COOL-FIT 2.0, COOL-FIT 2.0F, COOL-FIT 4.0 and COOL-FIT 4.0F of the dimension d63-d225



d1 (mm)	PN (bar)	Code	Weight (kg)	d (mm)	db1 (mm)	D1 (mm)	P1 (mm)	z (mm)
32	16	738 114 508	0.240	d63 - d225	11.8	73	39	49 + d/2



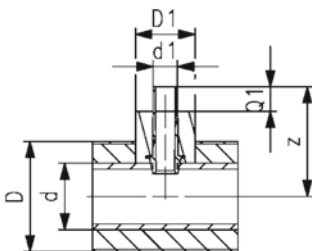
COOL-FIT 2.0 Weld-in port PE spigot

Model:

- Material: PE100
- With Weld-in port cone (PE100) and metric spigot SDR11 for transitions to COOL-FIT 2.0 fittings type A or PE Fittings
- Including insulation made from EPDM foam

Note:

For pipes COOL-FIT 2.0, COOL-FIT 2.0F, COOL-FIT 4.0 and COOL-FIT 4.0F



d1 (mm)	SDR	PN (bar)	Code	Weight (kg)	d (mm)	D1 (mm)	Q1 (mm)	z (mm)
32	11	16	738 114 608	0.070	d63 - d225	73	36	125 + d/2
40	11	16	738 114 609	0.104	d75 - d225	86	40	131 + d/2
50	11	16	738 114 610	0.152	d90 - d225	92	44	140 + d/2

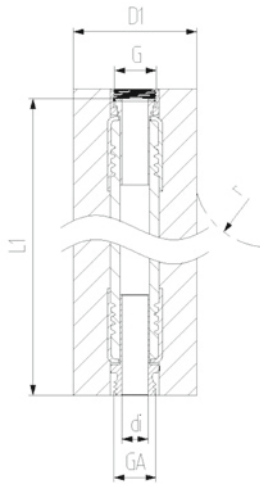
COOL-FIT 2.0 Flexible Hoses

COOL-FIT 2.0 Flexible hose



Model:

- EPDM flexible hose with stainless steel protection
- Brass adaptors
- Pre-Insulation made from NBR foam with outer jacket impact resistant and tearproof
- With loose union nut G on one end and male thread GA on the other



d (mm)	D1 (mm)	Thread	Size (inch)	DN (mm)	PN (bar)	Code	di (mm)	L1 (mm)	r (mm)
20	39	G/GA	1/2"	15	10	738 924 206	15	1000	119
25	44	G/GA	3/4"	20	10	738 924 207	19	1000	156
32	51	G/GA	1"	25	10	738 924 208	25	1000	192
40	59	G/GA	1 1/4"	32	8	738 924 209	32	1500	252
50	69	G/GA	1 1/2"	40	6	738 924 210	38	2000	312
63	82	G/GA	2"	50	6	738 924 211	52	2000	372

COOL-FIT 2.0 Valves

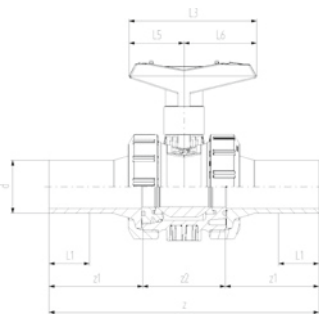
COOL-FIT 2.0 Ball valve hand-operated

Model:

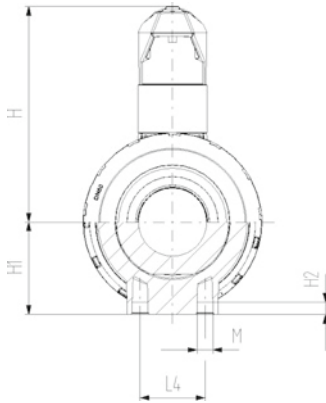
- Material: PVC-U with spigot PE100 SDR11, metric
- Ball seals type 542-PE/ blue lever ; type 546 PTFE/ red lever
- Integrated stainless steel mounting inserts for type 546
- Including insulation half shells



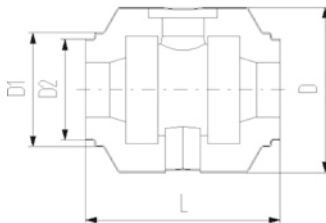
d (mm)	DN (mm)	PN	kv-value ($\Delta p=1$ bar) (L/min)	Code	Weight (kg)
32	25	16	700	138 541 308	0.550
40	32	16	1000	138 541 309	0.892
50	40	16	1600	138 541 310	1.187
63	50	16	3100	138 541 311	2.153
75	65	16	5000	138 546 312	5.550
90	80	16	7000	138 546 313	8.150



d (mm)	D (mm)	D1 (mm)	D2 (mm)	H (mm)	H1 (mm)	H2 (mm)	L (mm)	L1 (mm)	L3 (mm)	L4 (mm)	L5 (mm)	L6 (mm)	M	z (mm)	z1 (mm)
32	135	97	82	97	34		152	36	93		34	59		223	76
40	157	117	97	114	42		170	40	110		41	69		249	82
50	169	117	97	120	49		184	44	180		41	69		271	91
63	204	132	117	141	62		227	48	128		49	79		321	110
75	235	147	132	194	85	15	276	55	270	70	64	206	M8	386	125
90	255	168	147	200	105	15	297	62	270	70	64	206	M8	421	140



d (mm)	z2 (mm)	Type
32	71	542
40	85	542
50	89	542
63	101	542
75	136	546
90	141	546

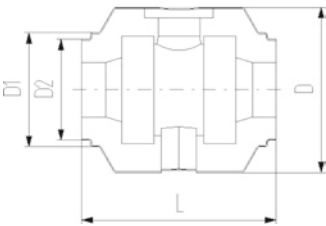
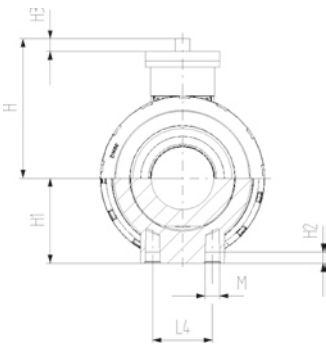
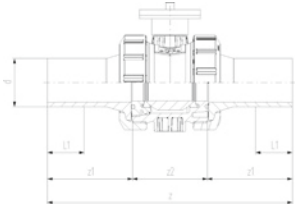




COOL-FIT 2.0 Ball valve type 546 Pro bare shaft

Model:

- Material: PVC-U with spigot PE100 SDR11, metric
- Ball seat PTFE
- Integrated stainless steel mounting inserts
- Interface according to DIN EN ISO 5211
- Including insulation half shells



d (mm)	DN (mm)	PN	kv-value ($\Delta p=1$ bar) (l/min)	SDR	EPDM Code	Weight (kg)
32	25	16	700	11	138 546 408	0.560
40	32	16	1000	11	138 546 409	0.900
50	40	16	1600	11	138 546 410	1.190
63	50	16	3100	11	138 546 411	2.110
75	65	16	5000	11	138 546 412	5.550
90	80	16	7000	11	138 546 413	8.150

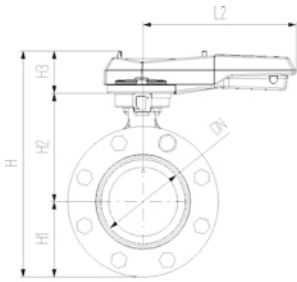
d (mm)	D (mm)	D1 (mm)	D2 (mm)	H (mm)	H1 (mm)	H2 (mm)	H3 (mm)	Hole pattern	L (mm)	L1 (mm)	M	z (mm)	z1 (mm)	z2 (mm)
32	135	97	82	72	36	12	11	F05/F03	152	36	M6	223	76	71
40	157	117	97	84	44	15	11	F05/F03	170	40	M8	249	82	85
50	169	117	97	90	51	15	11	F05/F03	184	44	M8	271	91	89
63	204	132	117	105	64	15	10	F05/F03	227	48	M8	321	110	101
75	235	147	132	177	85	15	21	F07	276	55	M8	386	125	136
90	235	168	147	189	105	15	21	F07	297	62	M8	421	140	141



COOL-FIT 2.0 Wafer-style butterfly valve kit type 567 Hand lever with ratchet settings

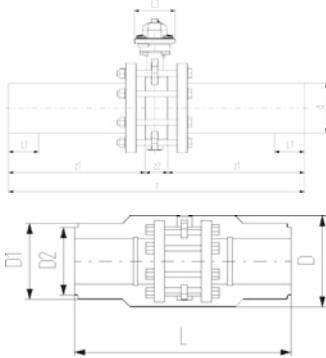
Model:

- Material: PVC-U with spigot PE100 SDR11, metric
- Including flange adaptors, backing flanges PP-Steel, bolts and insulation half shells



d (mm)	DN (mm)	PN	kv-value ($\Delta p=1$ bar) (L/min)	EPDM Code	Weight (kg)
110	100	10	6500	138 567 314	3.500
140	125	10	11500	138 567 316	4.500

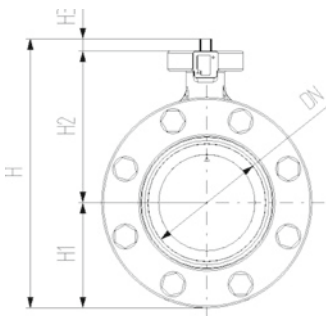
d (mm)	D (mm)	D1 (mm)	D2 (mm)	L (mm)	L1 (mm)	L2 (mm)	L3 (mm)	H (mm)	H1 (mm)	H2 (mm)	H3 (mm)	z (mm)	z1 (mm)	z2 (mm)
110	260	188	168	552	72	255	106	325	104	167	55	696	320	56
140	287	233	208	662	84	255	106	352	117	181	55	830	383	64



COOL-FIT 2.0 Butterfly valve kit type 567 PVC-U Bare shaft

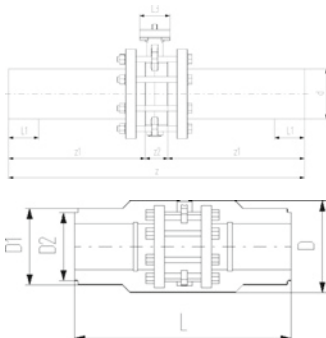
Model:

- Material: PVC-U with spigot PE100 SDR11, metric
- Interface F07 according to DIN/ISO 5211
- Including flange adaptors, backing flanges PP-Steel, bolts and insulation half shells



d (mm)	DN (mm)	PN	kv-value ($\Delta p=1$ bar) (L/min)	EPDM Code
110	100	10	6500	138 567 414
140	125	10	11500	138 567 416

d (mm)	D (mm)	D1 (mm)	D2 (mm)	L (mm)	L1 (mm)	L3 (mm)	H1 (mm)	H2 (mm)	H3 (mm)	z (mm)	z1 (mm)	z2 (mm)
110	260	188	168	552	72	106	104	167	55	696	320	56
140	287	233	208	662	84	106	117	181	55	830	383	64





Wafer-style, intermediate installation butterfly valve type 565 PVDF/PA-GF
With hand lever
Flange standard metric/ANSI/BS/JIS
Suitable for ABS, PVC-U, PVC-C, ecoFIT, COOL-FIT and PROGEF Systems

Model:

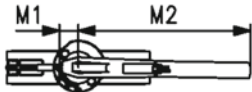
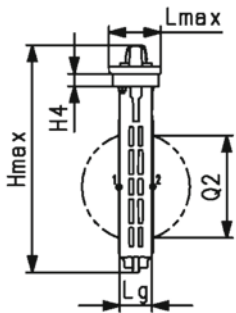
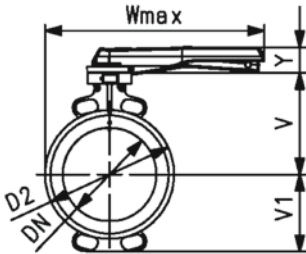
- Installation length: EN558 row 20, ISO 5752 row 20, API 609 table 2
- Flange standards: ISO 7005 PN10/16, EN 1092 PN10/16, DIN 2501 PN10/16, ANSI/ASME B 16.5 Class 150, BS 1560: 1989 Class 125/150; BS 4504 PN10/16, JIS B 2220 10K, JIS B 2239 10K
- For easy installation and removal
- Lockable ergonomic lever
- Suitable for water and water treatment applications (e.g. sea water, drinking water and industrial water)

Option:

- Individual configuration of the valve possible
- Pneumatic or electric actuators from GF
- Double sensor for electrical position feedback incl. LED feedback

Note:

For some material combination (e.g. DN300 valves with PE/PP pipes) special flange adapters are needed. Please check the "Perfect flange connection tool" on www.gfps.com



d	Size	DN	PN	kv-value	EPDM	SP	Weight
(mm)	(inch)	(mm)	(bar)	($\Delta p=1$ bar)	Code		(kg)
				(L/min)			
63	2	50	16	1445	199 565 000	1	1.3
75	2 ½	65	16	2530	199 565 001	1	1.5
90	3	80	16	4020	199 565 002	1	1.7
110	4	100	16	5850	199 565 003	1	2.5
140	5	125	16	11900	199 565 004	1	3.1

d	D2	Wmax	Hmax	Lmax	H4	V	V1	Lg	M1	M2	Y	Q2
(mm)	(mm)	(mm)	(mm)	(mm)	(mm)	(mm)	(mm)	(mm)	(mm)	(mm)	(mm)	(mm)
63	100.0	264.0	249.5	96.0	23.0	133.5	63.0	43.0	35.5	204.5	53.0	28.5
75	121.0	271.0	275.5	96.0	23.0	140.0	82.0	46.0	35.5	204.5	53.0	44.0
90	138.0	273.5	288.0	96.0	23.0	146.0	89.0	46.0	35.5	204.5	53.0	63.5
110	158.5	334.0	324.0	96.0	23.0	166.5	104.0	52.0	35.5	254.5	53.0	84.0
140	187.0	348.0	351.0	96.0	23.0	180.0	118.0	56.0	35.5	254.5	53.0	110.5



Wafer-style, intermediate installation butterfly valve type 565 PVDF/PA-GF

Bare shaft

Flange standard metric/ANSI/BS/JIS Suitable for ABS, PVC-U, PVC-C, ecoFIT, COOL-FIT and PROGEF Systems

Model:

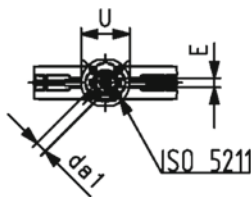
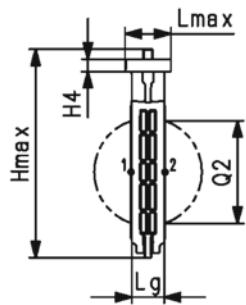
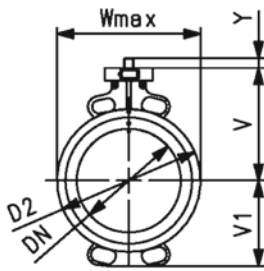
- Installation length: EN558 row 20, ISO 5752 row 20, API 609 table 2
- Flange standards: ISO 7005 PN10/16, EN 1092 PN10/16, DIN 2501 PN10/16, ANSI/ASME B 16.5 Class 150, BS 1560: 1989 Class 125/150; BS 4504 PN10/16, JIS B 2220 10K, JIS B 2239 10K
- For easy installation and removal
- Suitable for water and water treatment applications (e.g. sea water, drinking water and industrial water)

Option:

- Individual configuration of the valve possible
- Hand (lockable), pneumatic or electric actuators from GF
- Double sensor for electrical position feedback incl. LED feedback

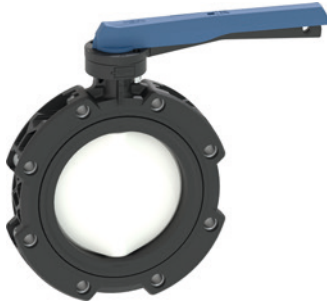
Note:

For some material combination (e.g. DN300 valves with PE/PP pipes) special flange adapters are needed. Please check the "Perfect flange connection tool" on www.gfps.com



d (mm)	DN (mm)	Size (inch)	PN (bar)	kv-value ($\Delta p=1$ bar) (L/min)	Acc.to ISO 5211	EPDM Code	SP	Weight (kg)
63	50	2	16	1445	F07	199 565 100	1	0.9
75	65	2 ½	16	2530	F07	199 565 101	1	1.1
90	80	3	16	4020	F07	199 565 102	1	1.3
110	100	4	16	5850	F07	199 565 103	1	2.0
140	125	5	16	11900	F07	199 565 104	1	2.6

d (mm)	D2 (mm)	Wmax (mm)	Lmax (mm)	Hmax (mm)	H4 (mm)	V (mm)	V1 (mm)	Lg (mm)	da1 (mm)	E (mm)	U (mm)	Y (mm)	Q2 (mm)
63	100.0	118.5	85.5	222.5	23.0	133.5	63.0	43.0	14.1	11.0	90.0	27.0	28.5
75	121.0	132.5	85.5	248.5	23.0	140.0	82.0	46.0	14.1	11.0	90.0	27.0	44.0
90	138.0	138.0	85.5	261.0	23.0	146.0	89.0	46.0	14.1	11.0	90.0	27.0	63.5
110	158.5	158.5	85.5	286.0	23.0	166.5	104.0	52.0	18.1	14.0	90.0	16.0	84.0
140	187.0	187.0	85.5	313.5	23.0	180.0	118.0	56.0	18.1	14.0	90.0	16.0	110.5



Lug-style end installation butterfly valve type 565L PVDF/PA-GF
With hand lever
Flange standard ISO/Metric
Suitable for ABS, PVC-U, PVC-C, ecoFIT, COOL-FIT and PROGEF Systems

Model:

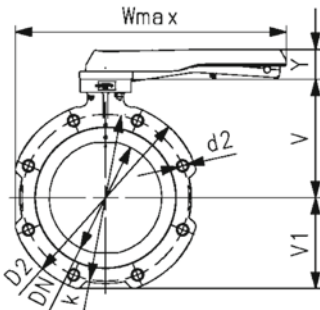
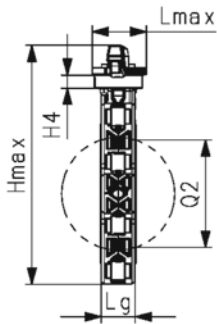
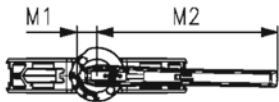
- Installation length: EN558 row 20, ISO 5752 row 20, API 609 table 2
- Flange standards: ISO 7005 PN10/16, EN 1092 PN10/16, DIN 2501 PN10/16
- For easy installation and removal
- Lockable ergonomic lever
- Suitable for water and water treatment applications (e.g. sea water, drinking water and industrial water)

Option:

- Individual configuration of the valve possible
- Pneumatic or electric actuators from GF
- Double sensor for electrical position feedback incl. LED feedback

Note:

For some material combination (e.g. DN300 valves with PE/PP pipes) special flange adapters are needed. Please check the "Perfect flange connection tool" on www.gfps.com



d (mm)	DN (mm)	Size (inch)	PN (bar)	kv-value ($\Delta p=1$ bar) (L/min)	EPDM Code	Weight (kg)
63	50	2	16	1445	199 575 000	1.308
75	65	2 ½	16	2530	199 575 001	1.542
90	80	3	16	4020	199 575 002	1.712
110	100	4	16	5850	199 575 003	4.102
140	125	5	16	11900	199 575 004	3.086

d (mm)	DN (mm)	Hmax (mm)	Lmax (mm)	Wmax (mm)	V (mm)	V1 (mm)	Y (mm)	Lg (mm)	Q2 (mm)	k (mm)	d2 (mm)	D2 (mm)	H4 (mm)	M1 (mm)
63	50	256.4	96	274.5	133.3	70.1	53	43	28.3	125	M16	155	23	35.5
75	65	273.7	96	285.0	139.9	80.8	53	46	43.8	145	M16	175	23	35.5
90	80	289.9	96	294.5	145.6	91.3	53	46	63.5	160	M16	190	23	35.5
110	100	325.6	96	360.0	166.4	106.2	53	52	83.7	180	M16	221	23	35.5
140	125	353.3	96	374.0	180.0	120.3	53	56	110.4	210	M16	250	23	35.5

d (mm)	DN (mm)	M2 (mm)
63	50	204.5
75	65	204.5
90	80	204.5
110	100	254.5
140	125	254.5



Lug-style end installation butterfly valve type 565L PVDF/PA-GF
Reduction gear with hand wheel
Flange standard ISO/Metric
Suitable for ABS, PVC-U, PVC-C, ecoFIT, COOL-FIT and PROGEF Systems

Model:

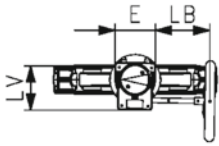
- Installation length: EN558 row 20, ISO 5752 row 20, API 609 table 2
- Flange standards: ISO 7005 PN10/16, EN 1092 PN10/16, DIN 2501 PN10/16
- For easy installation and removal
- Suitable for water and water treatment applications (e.g. sea water, drinking water and industrial water)

Option:

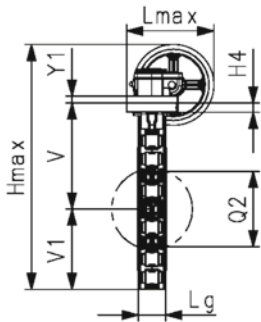
- Individual configuration of the valve possible
- Hand (lockable hand lever), pneumatic or electric actuators from GF
- Double sensor for electrical position feedback incl. LED feedback

Note:

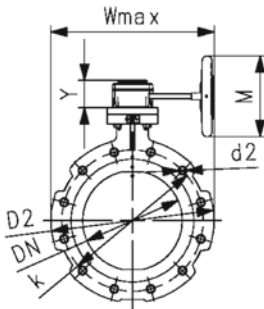
For some material combination (e.g. DN300 valves with PE/PP pipes) special flange adapters are needed. Please check the "Perfect flange connection tool" on www.gfps.com



d (mm)	DN (mm)	Size (inch)	PN (bar)	EPDM Code	Weight (kg)
63	50	2	16	199 575 200	3.009
75	65	2 ½	16	199 575 201	3.243
90	80	3	16	199 575 202	3.413
110	100	4	16	199 575 203	4.152
140	125	5	16	199 575 204	4.721



d (mm)	DN (mm)	Hmax (mm)	Lmax (mm)	Wmax (mm)	V (mm)	V1 (mm)	Y (mm)	Lg (mm)	Q2 (mm)	k (mm)	d2 (mm)	D2 (mm)	H4 (mm)	E (mm)
63	50	344.6	190.75	251.0	133.3	70.1	61.2	43	28.3	125	M16	155	23	80
75	65	361.9	190.75	261.5	139.9	80.8	61.2	46	43.8	145	M16	175	23	80
90	80	378.1	190.75	271.0	145.6	91.3	61.2	46	63.5	160	M16	190	23	80
110	100	413.8	190.75	286.5	166.4	106.2	61.2	52	83.7	180	M16	221	23	80
140	125	441.5	190.75	300.5	180.0	120.3	61.2	56	110.4	210	M16	250	23	80



d (mm)	DN (mm)	Y1 (mm)	M (mm)	LV (mm)	LB (mm)
63	50		160	112.3	129.5
75	65		160	112.3	129.5
90	80		160	112.3	129.5
110	100		160	112.3	129.5
140	125		160	112.3	129.5



Lug-style end installation butterfly valve type 565L PVDF/PA-GF
Bare Shaft
Flange standard ISO/Metric
Suitable for ABS, PVC-U, PVC-C, ecoFIT, COOL-FIT and PROGEF Systems

Model:

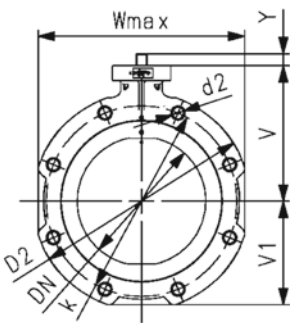
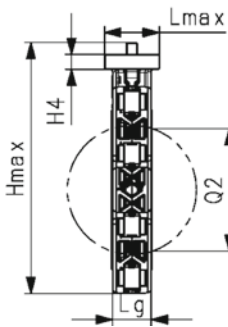
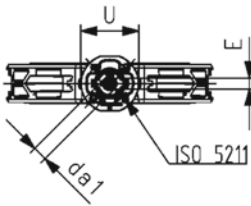
- Installation length: EN558 row 20, ISO 5752 row 20, API 609 table 2
- Flange standards: ISO 7005 PN10/16, EN 1092 PN10/16, DIN 2501 PN10/16
- For easy installation and removal
- Suitable for water and water treatment applications (e.g. sea water, drinking water and industrial water)

Option:

- Individual configuration of the valve possible
- Hand (lockable), pneumatic or electric actuators from GF
- Double sensor for electrical position feedback incl. LED feedback

Note:

For some material combination (e.g. DN300 valves with PE/PP pipes) special flange adapters are needed. Please check the "Perfect flange connection tool" on www.gfps.com



d (mm)	DN (mm)	Size (inch)	PN (bar)	Acc.to ISO 5211	EPDM Code	Weight (kg)
63	50	2	16	F07	199 575 100	0.881
75	65	2 ½	16	F07	199 575 101	1.115
90	80	3	16	F07	199 575 102	1.285
110	100	4	16	F07	199 575 103	2.024
140	125	5	16	F07	199 575 104	2.593

d (mm)	DN (mm)	Hmax (mm)	Lmax (mm)	Wmax (mm)	V (mm)	V1 (mm)	Y (mm)	Lg (mm)	Q2 (mm)	k (mm)	d2 (mm)	D2 (mm)	H4 (mm)	U (mm)
63	50	230.4	84.8	140	133.3	70.1	27	43	28.3	125	M16	155	23	90
75	65	247.7	84.8	161	139.9	80.8	27	46	43.8	145	M16	175	23	90
90	80	263.9	84.8	180	145.6	91.3	27	46	63.5	160	M16	190	23	90
110	100	288.6	84.8	211	166.4	106.2	16	52	83.7	180	M16	221	23	90
140	125	316.3	84.8	239	180.0	120.3	16	56	110.4	210	M16	250	23	90

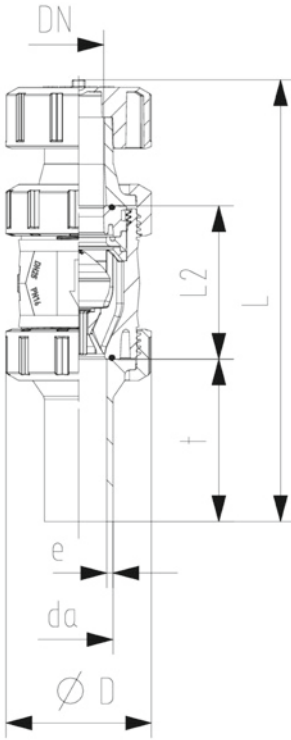
d (mm)	DN (mm)	E (mm)	da1 (mm)
63	50	11	14.1
75	65	11	14.1
90	80	11	14.1
110	100	14	18.1
140	125	14	18.1



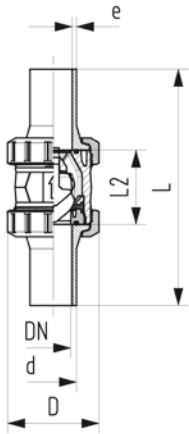
ecoFIT Ventilating and bleed valve Type 591
With butt fusion spigots long
PE100 SDR11 metric

Model:

- Material: PVC-U/PE
- With protection cap up to DN50 made of PP-GF, DN65-100 made of POM
- Floater made of PP-H
- Designed for easy installation and removal
- Compact installation length



d	DN	PN	EPDM	D	L	L2	t	e	closest inch
(mm)	(mm)	(bar)	Code	(mm)	(mm)	(mm)	(mm)	(mm)	(inch)
20	15	16	161 591 121	50	175	56	69	2.25	½
25	20	16	161 591 122	58	195	65	76	2.30	¾
32	25	16	161 591 123	68	207	71	76	2.90	1
40	32	16	161 591 124	84	230	85	82	3.70	1 ¼
50	40	16	161 591 125	97	254	89	91	4.60	1 ½
63	50	16	161 591 126	124	298	101	110	5.80	2
75	65	16	161 591 127	166	334	136	125	6.80	2 ½
90	80	16	161 591 128	200	360	141	140	8.20	3
110	100	16	161 591 129	238	411	164	160	10.00	4



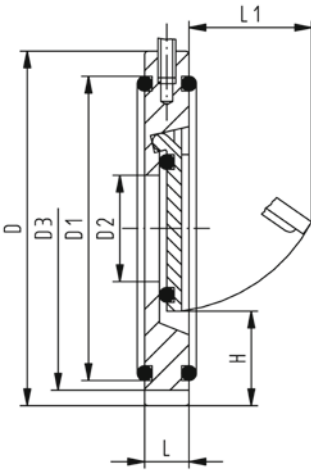
ecoFIT Check valve type 561 PVC-U
Without spring
With butt fusion spigots long PE100 SDR11 metric

Model:

- Material: PVC-U/PE
- Designed for easy installation and removal
- Vibration free even at high flow velocity
- Flow-optimized return cone, double guided
- For vertical installation
- Compact installation length, same as ball valve type 546
- Z-length, end connectors and union nuts **not** compatible with type 360

d	DN	Size	PN	kv-value	SDR	EPDM	Weight
(mm)	(mm)	(inch)	(bar)	($\Delta p=1$ bar)		Code	(kg)
				(l/min)			
20	15	½	16	180	11	161 561 142	0.130
25	20	¾	16	380	11	161 561 143	0.260
32	25	1	16	460	11	161 561 144	0.300
40	32	1 ¼	16	850	11	161 561 145	0.520
50	40	1 ½	16	1080	11	161 561 146	0.780
63	50	2	16	1670	11	161 561 147	1.410
75	65	2 ½	10	2950	11	161 561 148	3.260
90	80	3	10	3600	11	161 561 149	5.170
110	100	4	10	4150	11	161 561 150	8.310

d	D	L	L2	e	closest
(mm)	(mm)	(mm)	(mm)	(mm)	inch
					(inch)
20	50	193	56	2.3	½
25	58	216	65	2.3	¾
32	68	223	71	3.0	1
40	84	249	85	3.7	1 ¼
50	97	271	89	4.6	1 ½
63	124	321	101	5.8	2
75	166	386	136		2 ½
90	200	421	141	8.2	3
110	238	484	164	10.0	4



**Wafer check valve type 369 PVC-U
Without spring**

Model:

- Supporting eyelets for simple fitting
- Suitable for vertical and horizontal mounting

Installation instruction:

- Installation between ISO/DIN (all dimensions) and ANSI/BS flange adaptors (all except DN32 and DN125)
- Installation with ANSI/BS flange adaptor: for wafer check valves DN40 to DN80 you have to use ANSI/BS flange adaptors with the next bigger dimension (example DN40 wafer check valve between DN50 ANSI/BS flange adaptor)
- Centering by body diameter (ISO/DIN by D3, ANSI/BS by D)
- Sealing with special flange gasket (except DN32, o-ring)
- A stabilizing zone of at least 5 times nominal diameter (DN) should be provided before and after the wafer check valve (10 times DN is recommended)
- No direct installation on pump flange or following bend allowed
- The using of PVC-U pipe PN16 is only possible up to d63
- Wafer check valves without reset spring are not recommended for pulsating flows (production of noise)

d (mm)	DN (mm)	Size (inch)	PN (bar)	EPDM Code	SP	Weight (kg)
40	32	1 ¼	10	161 369 002	1	0.110
50	40	1 ½	10	161 369 003	1	0.174
63	50	2	10	161 369 004	1	0.273
75	65	2 ½	10	161 369 005	1	0.352
90	80	3	10	161 369 006	1	0.560
110	100	4	10	161 369 007	1	0.651
140	125	5	10	161 369 009	1	0.791

d (mm)	D (mm)	D1 (mm)	D2 (mm)	D3 (mm)	L (mm)	L1 (mm)	H (mm)	Opening pressure vertical (mbar)	Opening pres- sure horizontal (mbar)	Minimum water col- umn for seal- ing (m)
40	85	59	18		15	22	25	10	1	2
50	105	77	22	95	16	27	27	10	1	2
63	124	92	32	109	18	40	29	10	1	2
75	137	111	40	129	20	55	31	10	1	2
90	175	131	54	144	20	67	32	10	1	2
110	175	153	70	164	23	77	31	10	1	2
140	195	185	92		23	94	35	10	1	2



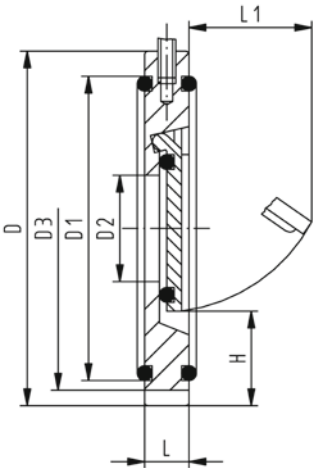
**Wafer check valve type 369 PVC-U
With V4A spring (stainless steel 316)**

Model:

- Supporting eyelets for simple fitting
- Suitable for vertical and horizontal mounting

Installation instruction:

- Installation between ISO/DIN (all dimensions) and ANSI/BS flange adaptors (all except DN32 and DN125)
- Installation with ANSI/BS flange adaptor: for wafer check valves DN40 to DN80 you have to use ANSI/BS flange adaptors with the next bigger dimension (example DN40 wafer check valve between DN50 ANSI/BS flange adaptor)
- Centering by body diameter (ISO/DIN by D3, ANSI/BS by D)
- Sealing with special flange gasket (except DN32, o-ring)
- A stabilizing zone of at least 5 times nominal diameter (DN) should be provided before and after the wafer check valve (10 times DN is recommended)
- No direct installation on pump flange or following bend allowed
- The using of PVC-U pipe PN16 is only possible up to d63



d (mm)	DN (mm)	Size (inch)	PN (bar)	EPDM Code	SP	Weight (kg)
40	32	1 ¼	10	161 369 042	1	0.130
50	40	1 ½	10	161 369 043	1	0.160
63	50	2	10	161 369 044	1	0.273
75	65	2 ½	10	161 369 045	1	0.357
90	80	3	10	161 369 046	1	0.561
110	100	4	10	161 369 047	1	0.651
140	125	5	10	161 369 049	1	0.791

d (mm)	D (mm)	D1 (mm)	D2 (mm)	D3 (mm)	L (mm)	L1 (mm)	H (mm)	Opening pressure vertical (mbar)	Opening pres- sure horizontal (mbar)	Minimum water col- umn for seal- ing (m)
40	85	59	18		15	22	25	30	20	2
50	105	77	22	95	16	27	27	30	20	2
63	124	92	32	109	18	40	29	30	20	2
75	137	111	40	129	20	55	31	30	20	2
90	175	131	54	144	20	67	32	30	20	2
110	175	153	70	164	23	77	31	30	20	2
140	195	185	92		23	94	35	30	20	2



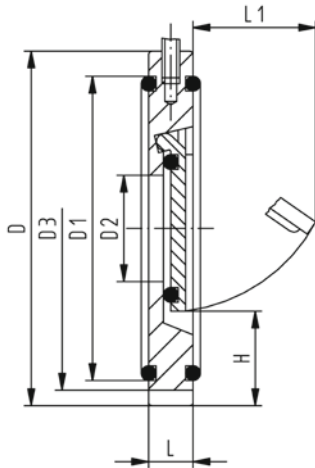
**Wafer check valve type 369 PVC-U
With Hastelloy C spring**

Model:

- Supporting eyelets for simple fitting
- Suitable for vertical and horizontal mounting

Installation instruction:

- Installation between ISO/DIN (all dimensions) and ANSI/BS flange adaptors (all except DN32 and DN125)
- Installation with ANSI/BS flange adaptor: for wafer check valves DN40 to DN80 you have to use ANSI/BS flange adaptors with the next bigger dimension (example DN40 wafer check valve between DN50 ANSI/BS flange adaptor)
- Centering by body diameter (ISO/DIN by D3, ANSI/BS by D)
- Sealing with special flange gasket (except DN32, o-ring)
- A stabilizing zone of at least 5 times nominal diameter (DN) should be provided before and after the wafer check valve (10 times DN is recommended)
- No direct installation on pump flange or following bend allowed
- The using of PVC-U pipe PN16 is only possible up to d63



d (mm)	DN (mm)	Size (inch)	PN (bar)	EPDM Code	SP	Weight (kg)
40	32	1 ¼	10	161 369 082	1	0.130
50	40	1 ½	10	161 369 083	1	0.174
63	50	2	10	161 369 084	1	0.250
75	65	2 ½	10	161 369 085	1	0.320
90	80	3	10	161 369 086	1	0.390
110	100	4	10	161 369 087	1	0.654
140	125	5	10	161 369 089	1	0.750

d (mm)	D (mm)	D1 (mm)	D2 (mm)	D3 (mm)	L (mm)	L1 (mm)	H (mm)	Opening pressure vertical (mbar)	Opening pres- sure horizontal (mbar)	Minimum water col- umn for seal- ing (m)
40	85	59	18		15	22	25	30	20	2
50	105	77	22	95	16	27	27	30	20	2
63	124	92	32	109	18	40	29	30	20	2
75	137	111	40	129	20	55	31	30	20	2
90	175	131	54	144	20	67	32	30	20	2
110	175	153	70	164	23	77	31	30	20	2
140	195	185	92		23	94	35	30	20	2



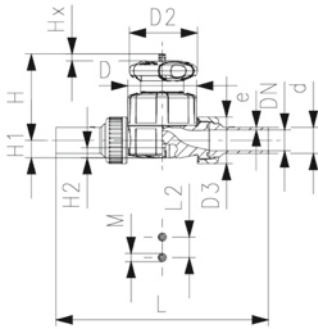
ecoFIT Diaphragm valve type 514
With butt and electro fusion ends PE100 SDR11 metric

Model:

- Material: PVC-U/PE
- Double flow rate compared to predecessor
- One housing nut replaces four screws
- Handwheel with built-in locking mechanism
- For easy installation and removal
- Short overall length

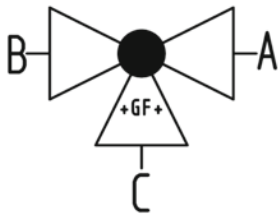
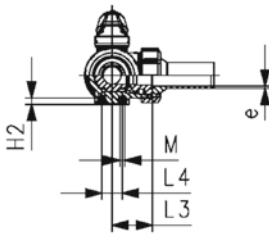
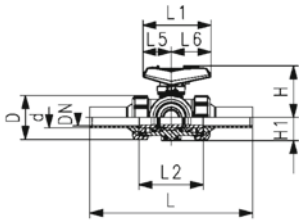
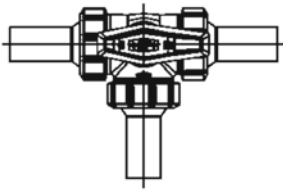
Option:

- Individual configuration of the valve
- Self adjusting multifunctional module with integrated limit switches
- PN16 available as a configuration



d (mm)	DN (mm)	Size (inch)	PN (bar)	kv-value ($\Delta p=1$ bar) (l/min)	EPDM Code	Weight (kg)
20	15	½	10	125	161 514 312	0.357
25	20	¾	10	271	161 514 313	0.431
32	25	1	10	481	161 514 314	0.683
40	32	1 ¼	10	759	161 514 315	1.443
50	40	1 ½	10	1263	161 514 316	1.663
63	50	2	10	1728	161 514 317	2.568

d (mm)	D (mm)	D2 (mm)	D3 (mm)	L (mm)	L2 (mm)	H (mm)	H1 (mm)	H2 (mm)	M	Lift = Hx (mm)	e (mm)	closest inch (inch)
20	65	65	43	196	25	73	14	12	M6	7	1.9	½
25	80	65	51	221	25	81	18	12	M6	10	2.3	¾
32	88	87	58	234	25	107	22	12	M6	13	2.9	1
40	101	87	72	260	45	115	26	15	M8	15	3.7	1 ¼
50	117	135	83	284	45	148	32	15	M8	19	4.6	1 ½
63	144	135	100	321	45	166	39	15	M8	25	5.8	2



ecoFIT 3-Way ball valve type 543 Pro PVC-U
Horizontal/L-port
With butt fusion spigots long PE100 SDR11 metric

Model:

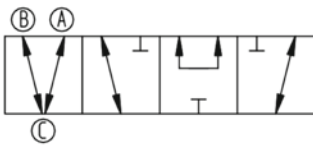
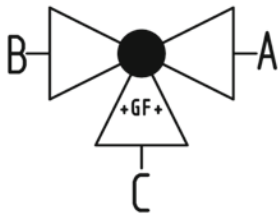
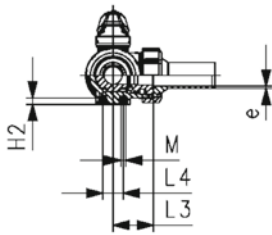
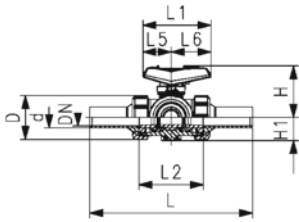
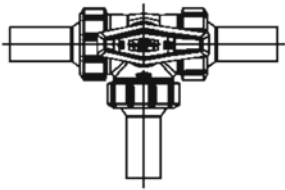
- Material: PVC-U/PE
- Lockable lever as standard (DN10-DN50)
- For easy installation and removal (valve end and union nut are compatible with type 546)
- Ball seat PTFE
- Angle of operation 360° without turn limiter
- Turn limiter 90° enclosed, in different positions usable as a clip-on ring
- Integrated stainless steel mounting inserts
- Delivery status A-C opened, see flow scheme
- Z-dimension, valve end and union nut are compatible with type 543 (1stGeneration)

Option:

- Interface-module with position feedback sensor, incl. LED feedback (DN10-50)
- Manual spring return lever ("Dead man") (DN10-25)
- Pneumatic or electric actuators from GF
- Individual configuration of the valve possible

d	DN	Size	PN	kv-value	EPDM	Weight
(mm)	(mm)	(inch)	(bar)	($\Delta p=1$ bar)	Code	(kg)
				(L/min)		
20	15	½	10	75	161 543 462	0.254
25	20	¾	10	150	161 543 463	0.370
32	25	1	10	280	161 543 464	0.563
40	32	1 ¼	10	480	161 543 465	0.953
50	40	1 ½	10	620	161 543 466	1.444
63	50	2	10	1230	161 543 467	3.141

d	D	L	L1	L2	L3	L4	L5	L6	H	H1	H2	M	e	closest
(mm)	(mm)	(mm)	(mm)	(mm)	(mm)	(mm)	(mm)	(mm)	(mm)	(mm)	(mm)	(mm)	(mm)	inch
														(inch)
20	50	210	82	73	36	25	35	47	61	28	8	6	1.9	½
25	58	237	106	86	43	25	44	62	74	32	8	6	2.3	¾
32	68	251	106	99	50	25	44	62	80	36	8	6	2.9	1
40	84	283	131	120	60	45	57	74	95	45	9	8	3.7	1 ¼
50	97	319	131	137	69	45	57	74	102	51	9	8	4.6	1 ½
63	124	399	152	179	89	45	66	86	117	65	9	8	5.8	2



ecoFIT 3-Way ball valve type 543 Pro PVC-U
Horizontal/T-port
With butt fusion spigots long PE100 SDR11 metric

Model:

- Material: PVC-U/PE
- Lockable lever as standard (DN10-DN50)
- For easy installation and removal (valve end and union nut are compatible with type 546)
- Ball seat PTFE
- Angle of operation 360° without turn limiter
- Turn limiter 90° enclosed, in different positions usable as a clip-on ring
- Integrated stainless steel mounting inserts
- Delivery status A-B-C opened, see flow scheme
- Z-dimension, valve end and union nut are compatible with type 543 (1stGeneration)

Option:

- Interface-module with position feedback sensor, incl. LED feedback (DN10-50)
- Manual spring return lever ("Dead man") (DN10-25)
- Pneumatic or electric actuators from GF
- Individual configuration of the valve possible

d (mm)	DN (mm)	Size (inch)	PN (bar)	kv-value ($\Delta p=1$ bar) (l/min)	EPDM Code	Weight (kg)
20	15	½	10	200	161 543 482	0.253
25	20	¾	10	470	161 543 483	0.368
32	25		10	793	161 543 484	0.556
40	32	1 ¼	10	1290	161 543 485	0.942
50	40	1 ½	10	1910	161 543 486	1.423
63	50	2	10	3100	161 543 487	2.770

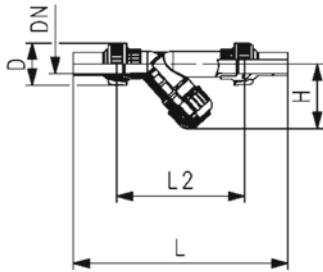
d (mm)	D (mm)	L (mm)	L1 (mm)	L2 (mm)	L3 (mm)	L4 (mm)	L5 (mm)	L6 (mm)	H (mm)	H1 (mm)	H2 (mm)	M (mm)	e (mm)	closest inch (inch)
20	50	210	82	73	36	25	35	47	61	28	8	6	1.9	½
25	58	237	106	86	43	25	44	62	74	32	8	6	2.3	¾
32	68	251	106	99	50	25	44	62	80	36	8	6	2.9	1
40	84	283	131	120	60	45	57	74	95	45	9	8	3.7	1 ¼
50	97	319	131	137	69	45	57	74	102	51	9	8	4.6	1 ½
63	124	399	152	179	89	45	66	86	117	65	9	8	5.8	2



ecoFIT Strainer type 305 PVC-U
With butt fusion spigots long PE100 SDR11 metric

Model:

- Material: PVC-U/PE
- Protects valves, pumps, etc. from becoming soiled
- Easy dismantling for cleaning the screens
- **Screen perforation need be ordered separately**



d (mm)	DN (mm)	PN (bar)	EPDM Code	D (mm)	L (mm)	L2 (mm)	H (mm)
25	20	10	161 305 750	50.5	279	164	75
32	25	10	161 305 800	57.8	295	176	89
40	32	10	161 305 850	71.5	325	200	102
50	40	10	161 305 900	83.0	357	226	118
63	50	10	161 305 950	100.9	403	266	146

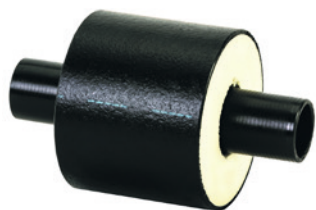


Screen perforation (7-11)

d (mm)	Size (inch)	DN (mm)	PVC-U 0.5mm (7) Code	PVC-U 0.8mm (8) Code	PVC-U 1.4mm (9) Code	PVC-U 2.2mm (10) Code	stainless steel 0.5mm AISI 316 (11) Code
25	¾	20	161 305 389	161 305 388	161 305 387	161 305 386	161 486 101
32	1	25	161 305 439	161 305 438	161 305 437	161 305 436	161 486 102
40	1 ¼	32	161 305 489	161 305 488	161 305 487	161 305 486	161 486 103
50	1 ½	40	161 305 539	161 305 538	161 305 537	161 305 536	161 486 104
63	2	50	161 305 589	161 305 588	161 305 587	161 305 586	161 486 105



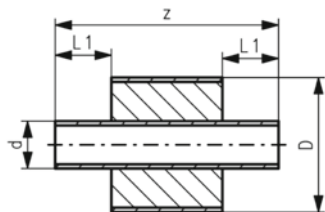
COOL-FIT 2.0 Accessories



COOL-FIT 2.0 Barrel nipple with insulation, d32-d140

Model:

- Pre-insulated PE100 SDR11 metric
- Insulation made from GF HE foam
- Impact resistant. Color: black
- For short connections between COOL-FIT 2.0 Fittings Typ A



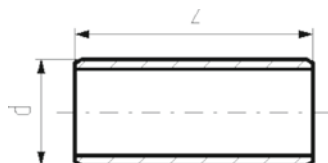
d (mm)	D (mm)	SDR	PN (bar)	Code	Weight (kg)	L1 (mm)	z (mm)
32	75	11	16	738 914 408	0.072	36	121
40	90	11	16	738 914 409	0.104	40	125
50	90	11	16	738 914 410	0.136	44	133
63	110	11	16	738 914 411	0.216	48	141
75	125	11	16	738 914 412	0.313	55	155
90	140	11	16	738 914 413	0.459	62	169
110	160	11	16	738 914 414	0.712	72	189
140	200	11	16	738 914 416	1.226	90	213



COOL-FIT 2.0/4.0 Barrel nipple

Model:

- PE100, SDR11/17, metric
- For the shortest possible connection between fittings
- For media temperatures between 0°C up to 60°C
- COOL-FIT 2.0/4.0 Adhesive ring needed for joining



d (mm)	DN (mm)	SDR	PN	Code	Weight (kg)	z (mm)
32	25	11	16	738 910 408	0.020	76
40	32	11	16	738 910 409	0.034	80
50	40	11	16	738 910 410	0.059	88
63	50	11	16	738 910 411	0.101	96
75	65	11	16	738 910 412	0.162	110
90	80	11	16	738 910 413	0.264	124
110	100	11	16	738 910 414	0.454	144
140	125	11	16	738 910 416	0.855	168
160	150	17	10	738 910 417	0.798	180
225	200	17	10	738 910 420	1.885	220

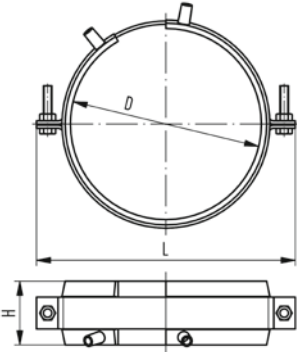


COOL-FIT 2.0/4.0 adhesive ring

Model:

- Double sided, for sealing connections of fittings with barrel nipple

D (mm)	d (mm)	d COOL-FIT 4.0 (mm)	d COOL-FIT 2.0 (mm)	Code	Weight (kg)
75	32		32	738 010 012	0.002
90	32 - 50	32	40 - 50	738 010 013	0.002
110	40 - 63	40 - 50	63	738 010 014	0.003
125	63 - 75	63	75	738 010 015	0.003
140	75 - 90	75	90	738 010 016	0.003
160	90 - 110	90	110	738 010 017	0.005
180	110	110		738 010 018	0.005
200	140		140	738 010 019	0.006



COOL-FIT 2.0/4.0 Fixed point

Model:

- The product consists of two components namely electrofusion tapes and pipe brackets.
- Electrofusion welded tape as permanent connection to transmit the forces that occur in the pipe to the fixed point.
- The delivered pipe brackets are needed to deliver welding pressure during installation and give stability during operation.
- For welding, use an MSA2.x, MSA4.x, MSA 250, 300, 350, 400 or commercially available 220 V fusion machines.
- If you use an MSA fusion machine from GF Piping Systems, use the 799 350 339 adapter or the 790 156 032 y-cable set.
- Please take note of the maximum allowed forces for this version in the table below.
- **Fixed point brackets and cross braces have to be calculated and obtained by the installer. They are not included in the fixed point set from GF.**

D (mm)	d (mm)	d COOL-FIT 4.0 (mm)	d COOL-FIT 2.0 (mm)	Code	Weight (kg)
75	32		32	738 912 012	0.750
90	32 - 50	32	40 - 50	738 912 013	0.895
110	40 - 63	40 - 50	63	738 912 014	0.904
125	63 - 75	63	75	738 912 015	1.103
140	75 - 90	75	90	738 912 016	1.188
160	90 - 110	90	110	738 912 017	1.177
180	110	110		738 912 018	1.530
200	140		140	738 912 019	1.600

D (mm)	d (mm)	L (mm)	H (mm)	max Force COOL-FIT 4.0 (kN)	max Force COOL-FIT 2.0 (kN)
75	32	150	60		2.0
90	32 - 50	170	60	2.0	3.0 / 5.0
110	40 - 63	180	60	3.0 / 5.0	8.0
125	63 - 75	215	60	8.0	10.0
140	75 - 90	220	60	10.0	10.0
160	90 - 110	255	60	10.0	10.0
180	110	255	60	10.0	
200	140	310	60		10.0



COOL-FIT Y cables kit

- The COOL-FIT Y cables are used to speed up the installation of the fixed points electrofusion tapes. The Y cables allow the welding in parallel of 2 E-Tapes, halving the total duration of the fusion process.
- Compatible with all MSA Units

Description	Code	Weight (kg)
4 leads cable with 2mm plugs in output	790 156 032	0.385

Hand scraper

- The Hand Scraper can be used to prepare the fusion zone on PE80 pipes.



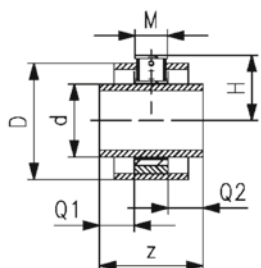
Description	Code	Weight (kg)
Hand scraper with long handle	799 198 094	0.143



COOL-FIT 2.0 Fixpoint kit for high forces

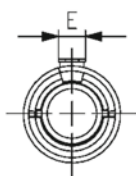
Model:

- The product consists of fixpoint, pipe section and insulation kit
- Fixed point for installation between two electrofusion fittings, transmits the forces emanating from the pipe to the fixed point
- Pipe section PE100 SDR11, metric
- Fixpoint with welding plate made from S235JR (1.0038). With corrosion protection coating
- Insulation made from EPDM soft foam. For outdoor application use additional protection
- Please take note of the maximum allowed forces for this version in the table below.
- A force calculation of the fixpoint clamp and the attachment point is required
- For the bonding, adhesive 738010060 is recommended



d	D	DN	SDR	PN	Code	Weight
(mm)	(mm)	(mm)		(bar)		(kg)
140	200	125	11	16	738 914 816	7.950

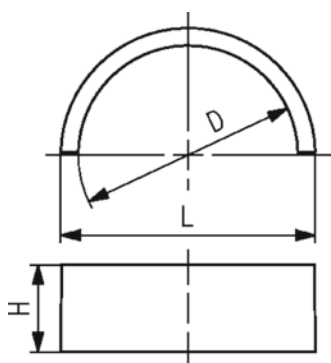
z	Q1	Q2	Dos	H	M	E	Wrench size	max. Force (kN)
(mm)	(mm)	(mm)	(mm)	(mm)	(mm)	(mm)	(mm)	
268	84	84	244	137	100	100	24	35



COOL-FIT 2.0F fixed point set

Model:

- Four PVC-U half shells as permanent connection to transmit the forces that occur in the pipe to the fixed point.
- For cementing use Tangit RAPID, Tangit RAPID static mixer and Tangit RAPID dispenser
- Please take note of the maximum allowed forces for this version in the table below.
- **Fixed point brackets and cross braces have to be calculated and obtained by the installer. They are not included in the fixed point set from GF.**



d	D	Code	Weight	L	H	max. Force	closest inch
(mm)	(mm)		(kg)	(mm)	(mm)	(kN)	(inch)
32	75	738 912 312	0.750	87	30	2.0	1
40 - 50	90	738 912 313	0.895	105	35	3.0 / 5.0	1 ¼ / 1 ½
63	110	738 912 314	0.904	128	35	8.0	2
75	125	738 912 315	1.103	142	35	10.0	2 1/2
90	140	738 912 316	1.188	162	35	10.0	3
110	160	738 912 317	1.177	183	35	10.0	4
140	200	738 912 319	1.600	221	35	10.0	5



Tangit Rapid cartridges kit

- 2-Component-Adhesive
- For PVC-U and PVC-C
- Tangit Rapid Kit consists of 6 cartridges, 12 mixers and 2 plastic brushes
- Tool needed: Tangit Rapid dispenser and mixers
- Check chemical resistance list (www.gfps.com)

Language	description	Code	Weight (kg)
DE, FR	50 ml	799 302 005	0.566
FR, NL	50 ml	799 302 041	0.566
DK, SE	50 ml	799 302 042	0.566
GB, IT	50 ml	799 302 043	0.566
FI, NO	50 ml	799 302 044	0.566
DE, ES, FR, GB, IT, NL, PT	400 ml	799 302 007	3.700
DK, FI, NO, SE	400 ml	799 302 047	3.700



Tangit Rapid mixer set

- For Tangit Rapid cartridges
- Bag with 30 pieces for 50ml and 15 pieces for 400ml

description	Code	SP	Weight (kg)
50ml	799 302 032	1	0.160
400ml	799 302 033	1	0.190



Tangit Rapid dispenser

- For Tangit Rapid cartridges

d-d (mm)	description	Code	SP	Weight (kg)
16 - 140	50ml	799 302 011	1	0.185
110 - 400	400ml	799 302 013	1	1.100



COOL-FIT 2.0/4.0 Adhesive cement

Model:

- For the jointing of NBR foam insulations of flexible hoses and transition fittings

Code	SP	Weight (kg)
738 010 060	1	0.240



COOL-FIT 2.0/4.0 Adhesive tape

Model:

- For the jointing of NBR foam insulations of flexible hoses and transition fittings
- 30m on a roll

Code	SP	Weight (kg)
738 010 065	1	0.400



Tangit KS Cleaner

- Special cleaner for plastic fusion connections in the material of PE, PP, PB, PVDF, ECTFE and PVC-U
- Suitable for Tangit Rapid. Must not be used for solvent cementing
- DVGW approved
- DW 5290 BR 0464

Size	Code	Weight (kg)
1 liter	799 298 023	0.872

Marker



Type	Code	Weight (kg)
silver	799 350 364	0.010

Deburring tool

- Replacable blade



Code	SP	Weight (kg)
790 205 082	1	0.058

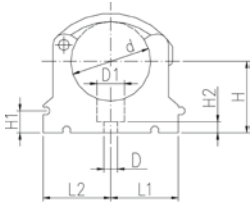
Measuring tape (circumference and diameter)



- Circumference: 2 m / 79 inch
- Diameter: 630 mm / 25 inch

Code	SP	Weight (kg)
790 205 087	1	0.045

KLIP-IT pipe clip type 061 PP metric

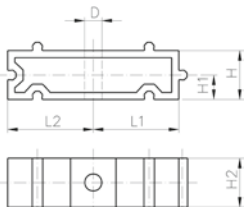


Model:

- Material: clip and safety clip PP black, UV resistant
- d16 - d63: height designed for ball valve type 546 and 543
- **Minimum order quantity: standard packagings SP**

	d (mm)	Code	SP	Weight (kg)
*	10	167 061 003	10	0.003
*	12	167 061 004	10	0.003
*	16	167 061 035	10	0.007
*	20	167 061 036	10	0.007
*	25	167 061 037	10	0.009
*	32	167 061 038	10	0.012
	40	167 061 039	10	0.027
	50	167 061 040	10	0.031
	63	167 061 041	10	0.052
	75	167 061 012	10	0.057
	90	167 061 013	10	0.092
	110	167 061 014	10	0.117
	125	167 061 015	10	0.180
	140	167 061 016	10	0.224

	d (mm)	D (mm)	D1 (mm)	H (mm)	H1 (mm)	H2 (mm)	H3 (mm)	L1 (mm)	L2 (mm)	SC	closest inch (inch)
*	10	5	8	20	10	6	12	11	14	M4	1/8
*	12	5	8	21	10	6	12	11	14	M5	1/4
*	16	6	11	27	10	6	16	14	17	M5	3/8
*	20	6	11	27	10	6	16	17	19	M5	1/2
*	25	6	11	30	10	6	16	19	22	M5	3/4
*	32	6	11	36	10	6	16	24	27	M5	1
	40	7	14	44	10	7	22	34	34	M6	1 1/4
	50	7	14	51	10	7	22	37	37	M6	1 1/2
	63	9	17	64	10	10	25	45	45	M8	2
	75	9	17	58	10	10	25	52	52	M8	2 1/2
	90	9	17	65	10	10	28	65	65	M8	3
	110	9	17	75	10	10	28	79	79	M8	4
	125	9	17	90	10	10	32	88	88	M8	
	140	9	17	110	10	10	32	98	98	M8	5

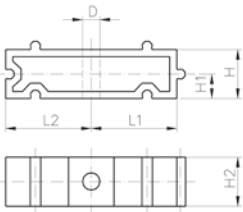


KLIP-IT spacer type 061 PP

Model:

- For pipe clips type 061/061H, PP black, UV resistant
- **Minimum order quantity: standard packaging SP**

	d (mm)	Inch (inch)	Code	SP	Weight (kg)	D (mm)	L1 (mm)	L2 (mm)	H (mm)	H1 (mm)	H2 (mm)	SC
	10 - 12	1/8 - 1/4	167 061 153	10	0.003	5	11	14	20	10	12	M4
	16	3/8	167 061 155	10	0.005	6	14	17	20	10	16	M5
	20	1/2	167 061 156	10	0.005	6	17	19	20	10	16	M5
	25	3/4	167 061 157	10	0.007	6	19	22	20	10	16	M5
	32	1	167 061 158	10	0.006	6	24	27	20	10	16	M5
	40	1 1/4	167 061 159	10	0.015	7	34	34	20	10	22	M6
	50	1 1/2	167 061 160	10	0.017	7	37	37	20	10	22	M6
	63	2	167 061 161	10	0.020	9	45	45	20	10	25	M8
	75	2 1/2	167 061 162	10	0.027	9	52	52	20	10	25	M8



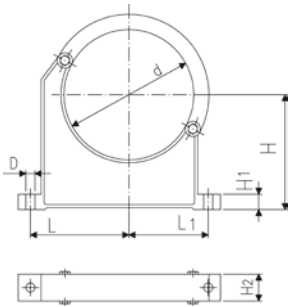
d (mm)	Inch (inch)	Code	SP	Weight (kg)	D (mm)	L1 (mm)	L2 (mm)	H (mm)	H1 (mm)	H2 (mm)	SC
90	3	167 061 163	10	0.039	9	65	65	20	10	28	M8
110	4	167 061 164	10	0.048	9	79	79	20	10	28	M8
125	4 ½	167 061 165	10	0.059	9	88	88	20	10	32	M8
140	5	167 061 166	10	0.065	9	98	98	20	10	32	M8



Pipe clip type 060 PP metric

Model:

- Material: clip and safety clip PP black, UV resistant
- **Minimum order quantity: standard packaging SP or gross packaging GP**
- Accidental opening of the safety clip is not possible
- Clip and safety clip are not assembled in the packaging.
- Pipes with flanges can be installed directly



d (mm)	Code	SP	Weight (kg)	D (mm)	L (mm)	L1 (mm)	H (mm)	H1 (mm)	H2 (mm)	SC	closest inch (inch)
90	167 060 038	10	0.144	9	89	71	105	15	33	M 8	3
110	167 060 039	10	0.158	9	94	80	115	15	33	M 8	4
125	167 060 040	10	0.249	11	116	91	130	20	35	M10	
140	167 060 041	10	0.260	11	121	99	130	20	35	M10	5

COOL-FIT 2.0 Tools

MSA 2.1 Automatic Electrofusion Unit with Bluetooth connectivity and protocols export



The MSA 2.1 automatic electro fusion unit combines light weight and high efficiency, thanks to its inverter technology and furthermore provides fusion documentation in PDF. The unit is extremely fast and simple, with three basic operations required to operator: connect, scan, start the fusion. It is robust, safe and ergonomic.

All is meant to simplify the job: the barcode scanner, for long distance reading, the cooling system to joint in series, the icon system, to keep the interaction between user and machine intuitive. The entire welding process is controlled and regulated with energy output compensation depending on ambient temperature and the indication of cooling time.

The internal Bluetooth Low Energy device offers the possibility to enter data, monitor the fusion from remote and collect the data recorded via wireless with consumer smartphones, to send them to the headquarter even in real time.

The unit can keep up to 1000 protocols permanently stored in the internal memory. The user can export the fusion reports to an USB stick to print them out in PDF format.

Scope of delivery includes: transport box, angle adapters (4.0 mm and 4.7 mm), operating instructions, START/STOP badge and USB memory stick with PC applications.

Technical Data:

- Operating temperature: -20°C to +50°C
- Mains voltage and frequency: 230V (190V - 265V), 50-60Hz
- Fusion voltage: 8-42 V (48 V)
- Fusion data input mode: bar code, manual
- Fusion current: 90 A (max)
- Suggested power generators: 3.5 kVA
- USB Port: Type A
- Protection factor: Class 1 / IP 65
- Mains cable: 4 m / Fusion cable: 4 m (8 m only for code 790156010)
- Weight: ca. 11.9 kg
- Display: Graphical LCD, adjustable contrast
- Independent from languages
- Bluetooth radio interface

Description	Code	Weight (kg)
Barcode scanner, transport case, mini Welding Book	790 156 003	11.900
Barcode scanner, transport case, mini Welding Book, Swiss plug	790 156 006	11.900
Barcode scanner, transport case, mini Welding Book, 8m fusion cable	790 156 010	12.900

COOL-FIT 2.0/4.0 Foam removal and peeling tool



Model:

- Tool for foam removal and peeling of COOL-FIT 2.0 and 4.0 pipes

d (mm)	Code	Weight (kg)	SDR
32-90	799 738 001	10.500	SDR11
110-225	799 738 003	16.500	d110+d140 SDR11; d160+d225 SDR17



COOL-FIT 2.0/4.0 Upgrade kit foam removal and peeling tool d140-d225

Model:

- Upgrade for COOL-FIT 2.0/4.0 foam removal and peeling tool d110-d225 (799738003)
- For easier foam removal and peeling of COOL-FIT 2.0 and 4.0 pipes in the dimensions d140-d225

Note:

Spindle and clamping shoes are to be used of COOL-FIT 2.0/4.0 foam removal and peeling tool 799738003, or 799738015 respectively.

d (mm)	Code	Weight (kg)
140-225	799 738 013	50.000



COOL-FIT 2.0/4.0 Installation tool weld-in port

Model:

- Tool for the installation of weld-in ports to COOL-FIT pipes
- Complete: toolcase equipped with all necessary tool components to install weld-in ports 1/2"-1" and d16-d50
- Basic: toolcase equipped with all necessary tool components to install weld-in ports 1/2"-1" and d16-d32 and the possibility to upgrade with d40+d50
- Upgrade kit: kit to upgrade basic tool to complete tool
- Version 230V with AC power plug CEE 7/4 (Schuko)
- Version 110V with AC power plug NEMA 5-15 grounded (Type B)

Note:

For pipes COOL-FIT 2.0, COOL-FIT 2.0F, COOL-FIT 4.0 and COOL-FIT 4.0F of the dimension d63-d225

Type A) Complete: toolcase equipped with all necessary tool components to install weld-in ports 1/2"-1" and d16-d50

Type B) Basic: toolcase equipped with all necessary tool components to install weld-in ports 1/2"-1" and d16-d32 and the possibility to upgrade with d40+d50

Type C) Upgrade kit: kit to upgrade basic tool to complete tool

Type	Voltage	Code	Weight (kg)
A	230 V	799 738 300	20.700
B	230 V	799 738 301	14.100
A	110 V	799 738 302	20.700
B	110 V	799 738 303	14.100
C		799 738 310	7.000



Clamping tool Double, multi size with universal link

- Recommended for the installation of fittings ELGEF Plus and ecoFIT d40 - 200 and d160 - 630mm
- Recommended for the installation of fittings COOL-FIT d32/D75 - d140/D200 and d160/D250 - d450/D630
- The clamping allows installation without tension and avoids movement during fusion and cooling time
- The centrally located adjustable universal link allows installation of electrofusion couplers, elbows and reducers
- Works above, below and alongside the joint
- Adaptor for use with Tee-pieces available (see accessories)

d (mm)	d1 (mm)	Code	Weight (kg)
40	200	799 301 490	4.200

d (mm)	Description	Length (mm)	Width (mm)	Height (mm)
40	Scope of delivery: 2 x V-block, 2 x Straight bar, 1 x Universal link, Transport bag (600x380x250)	900	290	230



Clamping tool Quadruple, multi size with universal link

- Recommended for the installation of fittings ELGEF Plus and ecoFIT d40 - 200 and d160 - 630mm
- Recommended for the installation of fittings COOL-FIT d32/D75 - d140/D200 and d160/D250 - d450/D630
- The clamping allows installation without tension and avoids movement during fusion and cooling time
- The centrally located adjustable universal link allows installation of electrofusion couplers, elbows and reducers
- Universal use; works above, below and alongside the joint
- Adaptor for use with Tee-pieces available (see accessories)

d (mm)	d1 (mm)	Code	Weight (kg)	Description	L (mm)	W (mm)	H (mm)
40	200	799 301 489	8.300	Scope of delivery: 4 x V-block, 2 x Straight bar, 1 x Universal link	900	290	230



Tee adaptor

- Suitable for clamping tool (799301495)

d (mm)	d1 (mm)	Code	Weight (kg)	Description	Length (mm)	Width (mm)	Height (mm)
40	200	799 301 491	0.610	Tee adaptor	600	50	40



V-block

- Suitable for clamping tool (799301495)

d (mm)	d1 (mm)	Code	Weight (kg)	Description	Length (mm)	Width (mm)	Height (mm)
40	200	799 301 492	1.000	V-block complete	290	230	65

COOL-FIT 2.0 Spare parts



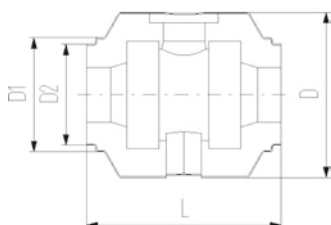
COOL-FIT 2.0/4.0 Insulation for ball valve type 546 / 542

Model:

- Set consisting of half shells and clamps

Note:

Suitable for COOL-FIT ball valve only



d (mm)	D (mm)	DN (mm)	Code	Weight (kg)	D1 (mm)	D2 (mm)	L (mm)
32	135	25	738 990 308	0.160	97	82	152
40	157	32	738 990 309	0.228	117	97	170
50	169	40	738 990 310	0.282	117	97	184
63	204	50	738 990 311	0.498	132	117	227
75	235	65	738 990 312	0.935	147	132	276
90	255	80	738 990 313	1.033	168	147	297



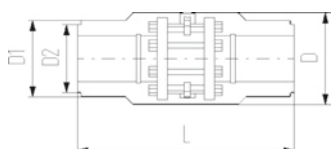
COOL-FIT 2.0/4.0 Insulation for Butterfly Valve Type 567

Model:

- Set consisting of half shells and clamps

Note:

Suitable for COOL-FIT butterfly valve only



d (mm)	D (mm)	DN (mm)	Code	Weight (kg)	D1 (mm)	D2 (mm)	L (mm)
110	310	100	738 990 324	2.054	188	168	556
140	287	125	738 990 326	2.947	233	208	662

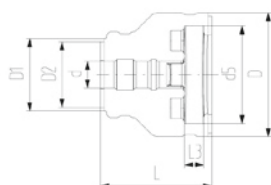
COOL-FIT 2.0/4.0 Insulation for flange adaptor

Model:

- Set consisting of half shells and clamps

Note:

Suitable for COOL-FIT flange adaptor only



d (mm)	D (mm)	DN (mm)	Code	Weight (kg)	D1 (mm)	D2 (mm)	L (mm)	L3 (mm)	d5 (mm)
32	135	25	738 990 458	0.230	90	75	162	26	121
40	170	32	738 990 459	0.340	110	90	165	28	146
50	180	40	738 990 460	0.400	110	90	178	30	156
63	200	50	738 990 461	0.560	125	110	230	32	171
75	220	65	738 990 462	0.650	140	125	232	34	191
90	240	80	738 990 463	0.830	160	140	245	35	206
110	270	100	738 990 464	1.100	180	160	254	36	235
140	300	125	738 990 466	1.140	225	200	299	38	256



COOL-FIT 2.0 Insulation for welding indicator

Model:

- Type A suitable for COOL-FIT 2.0 d32-d110 and d140 coupler
- Type B suitable for COOL-FIT 2.0 d140 except coupler

d (mm)	Code	Weight (kg)	Type	pieces/kit
32-140	738 010 051	0.055	A	20
140	738 010 056	0.010	B	10



Peeling blade d32-d90

- Suitable for COOL-FIT 2.0/4.0 foam removal and peeling tool (799 738 001)

d (mm)	Code	Weight (kg)
32	799 738 101	0.015
40	799 738 102	0.020
50	799 738 103	0.019
63	799 738 104	0.020
75	799 738 105	0.020
90	799 738 106	0.030



Peeling blade d110-d225

- Suitable for COOL-FIT 2.0/4.0 foam removal and peeling tool (799 738 003)

d (mm)	Code	Weight (kg)
110	799 738 107	0.100
140	799 738 108	0.100



Replacement blade foam separator

- Suitable for COOL-FIT 2.0/4.0 foam removal and peeling tool (799 738 004) and upgrade kit d140-d225 (799 738 013)

Code	Weight (kg)	Suitable for
799 738 115	0.100	799 738 004
799 738 117	0.080	799 738 013



O-Ring for clamping shoe

- Suitable for COOL-FIT 2.0/4.0 foam removal and peeling tool (799 738 001 and 799 738 003)

d (mm)	Code	Weight (kg)
32	799 738 050	0.003
110	799 738 051	0.010



Clamping shoe d32-d90

- Suitable for COOL-FIT 2.0/4.0 foam removal and peeling tool (799 738 001)

d (mm)	Code	Weight (kg)	Colour
32	799 738 020	0.240	silver
40	799 738 021	0.090	red
50	799 738 022	0.210	anthracite
63	799 738 023	0.120	gold
75	799 738 024	0.270	blue
90	799 738 025	0.480	black



Clamping shoe d110-d225

- Suitable for COOL-FIT 2.0/4.0 foam removal and peeling tool (799 738 003)
- Suitable for COOL-FIT 2.0/4.0 foam removal and peeling tool (799 738 015)
- Type A: Spindle start
- Type B: With pipe stop
- Delivery unit: 1 piece (3 pieces are required for complete circumference)

d (mm)	Type	Code	Weight (kg)	Colour	SDR
110		799 738 026	0.680	silver	SDR11
140	A	799 738 027	0.480	red	SDR11
140	B	799 738 037	0.480	red	SDR11



Circular blade

- Suitable for COOL-FIT 2.0/4.0 foam removal and peeling tool (799 738 001 and 799 738 003)

Code	Weight (kg)
799 738 040	0.008

Circular blade-Set



- Suitable for COOL-FIT 2.0/4.0 foam removal and peeling tool (799738001 and 799738003)
- Consists of: Circular blade, holder and screw

d (mm)	Code	Weight (kg)
32 - 90	799 738 048	0.025
110 - 225	799 738 049	0.025



Saw

- Suitable for COOL-FIT 2.0/4.0 foam removal and peeling tool (799 738 003)

d (mm)	Code	Weight (kg)
140 - 225	799 738 060	1.000



Saw blade

- Suitable for COOL-FIT 2.0/4.0 foam removal and peeling tool (799 738 003)

d (mm)	Code	Weight (kg)
140 - 225	799 738 061	0.029



Spare blades for deburring tool

- 10 pieces

Code	SP	Weight (kg)
790 205 083	1	0.031

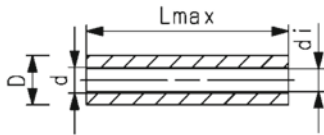
COOL-FIT 2.0 Push System Pipes and Fittings

COOL-FIT 2.0 Push System Pipe bar



Model:

- Pre-insulated multilayer (PE-RT/AL/PE-RT) pipe, metric
- Closed cell insulation based EPDM with polyester wire mesh for mechanical protection
- Colour: black



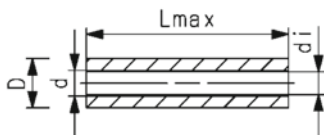
d (mm)	D (mm)	DN (mm)	PN (bar)	Code	Weight (kg)	di (mm)	L (mm)	closest inch (inch)
16	44	12	16	738 174 005	0.299	12	5000	¾
20	48	15	16	738 174 006	0.354	16	5000	½
25	54	20	16	738 174 007	0.521	20	5000	¾
32	61	25	16	738 174 008	0.481	26	5000	1

COOL-FIT 2.0 Push System Pipe coiled



Model:

- Pre-insulated multilayer (PE-RT/AL/PE-RT) pipe, metric
- Closed cell insulation based EPDM with polyester wire mesh for mechanical protection
- Colour: black



d (mm)	D (mm)	DN (mm)	PN (bar)	Code	Weight (kg)	di (mm)	L (mm)	closest inch (inch)
16	44	12	16	738 174 055	0.299	12	25000	¾
20	48	15	16	738 174 056	0.354	16	25000	½
25	54	20	16	738 174 057	0.521	20	25000	¾

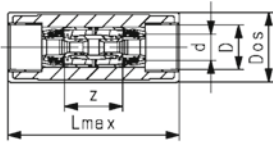


COOL-FIT 2.0 Push System Coupler

Model:

- Push fitting made of high-performance plastic PPSU
- Insulation shell of EPP with TPE jacket
- Colour: black
- Package contents: 1x module, 2x adaptors, 2x compression rings, 1x insulation shell

d (mm)	D (mm)	DN (mm)	PN (bar)	Code	Weight (kg)	Dos (mm)	Lmax (mm)	z (mm)
16	44	12	16	738 914 005	0.266	69	190	53
20	48	15	16	738 914 006	0.254	69	190	53
25	54	20	16	738 914 007	0.456	86	212	72
32	61	25	16	738 914 008	0.446	86	212	72

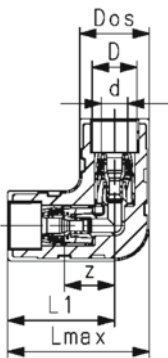


COOL-FIT 2.0 Push System Elbow 90°

Model:

- Push fitting made of high-performance plastic PPSU
- Insulation shell of EPP with TPE jacket
- Colour: black
- Package contents: 1x module, 2x adaptors, 2x compression rings, 1x insulation shell

d (mm)	D (mm)	DN (mm)	PN (bar)	Code	Weight (kg)	Dos (mm)	Lmax (mm)	L1 (mm)	z (mm)
16	44	12	16	738 104 005	0.294	69	145	110	41
20	48	15	16	738 104 006	0.282	69	145	110	41
25	54	20	16	738 104 007	0.550	86	175	132	62
32	61	25	16	738 104 008	0.540	86	175	132	62



COOL-FIT 2.0 Push System T90° equal

Model:

- Push fitting made of high-performance plastic PPSU
- Insulation shell of EPP with TPE jacket
- Colour: black
- Package contents: 1x module, 2x adaptors, 2x compression rings, 1x insulation shell

Note:

Additional COOL-FIT 2.0 Push System Adaptor kit needed for d16 and d20 738904055 or 73890456 for d25 and d32 738904057 or 73890458



d (mm)	d2 (mm)	D (mm)	DN (mm)	PN (bar)	Code	Weight (kg)	Dos1 (mm)	Dos2 (mm)	Lmax (mm)	L2 (mm)	z (mm)	z2 (mm)
16	16/20	44	12	16	738 204 005	0.344	69	69	207	110	72	37
20	16/20	48	15	16	738 204 006	0.332	69	69	207	110	72	37
25	25/32	54	20	16	738 204 007	0.648	86	86	246	132	106	54
32	25/32	61	25	16	738 204 008	0.638	86	86	246	132	106	54

COOL-FIT 2.0 Push System T90° reduced

Model:

- Push fitting made of high-performance plastic PPSU
- Insulation shell of EPP with TPE jacket
- Colour: black
- Package contents: 1x module, 2x adaptors, 2x compression rings, 1x insulation shell

Note:

Additional COOL-FIT 2.0 Push System, Adaptor kit 738904055 and 73890456 needed



d1 (mm)	d2 (mm)	D (mm)	DN (mm)	PN (bar)	Code	Weight (kg)	Dos1 (mm)	Dos2 (mm)	Lmax (mm)	L2 (mm)	z (mm)	z2 (mm)
25	16/20	54	20	16	738 204 017	0.597	86	69	246	121	106	48
32	16/20	61	25	16	738 204 018	0.587	86	69	246	121	106	48



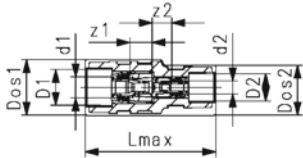
COOL-FIT 2.0 Push System Reducer

Model:

- Push fitting made of high-performance plastic PPSU
- Insulation shell of EPP with TPE jacket
- Colour: black
- Package contents: 1x module, 2x adaptors, 2x compression rings, 1x insulation shell

Note:

To reduce from d32 to d25 or from d20 to d16, a corresponding coupler (d1) plus an additional adaptor kit (d2) may be used



d1 (mm)	d2 (mm)	D1 (mm)	D2 (mm)	DN (mm)	PN (bar)	Code	Weight (kg)	Dos1 (mm)	Dos2 (mm)	Lmax (mm)	z1 (mm)	z2 (mm)
25	16	54	44	20	16	738 904 015	0.395	86	69	203	34	31
25	20	54	48	20	16	738 904 016	0.389	86	69	203	34	31
32	16	61	44	25	16	738 904 017	0.390	86	69	203	34	31
32	20	61	48	25	16	738 904 018	0.384	86	69	203	34	31

COOL-FIT 2.0 Push System Valves

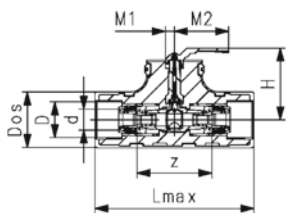


COOL-FIT 2.0 Push System Ball valve

Model:

- Ball valve with spindle extension
- Insulation shell of EPP with TPE jacket
- Colour: black
- Package contents: 1x ball valve, 2x adaptors, 2x compression rings, 1x insulation shell

d (mm)	D (mm)	DN (mm)	PN (bar)	kv-100-value ($\Delta p=1$ bar) (l/min)	Code	Weight (kg)	Dos (mm)	H (mm)	Lmax (mm)	M1 (mm)	M2 (mm)	z (mm)
16	44	12	16	16.3	138 984 005	0.739	69	108	232	14	84	97
20	48	15	16	16.3	138 984 006	0.732	69	108	232	14	84	97
25	54	20	16	29.5	138 984 007	1.155	86	111	246	14	84	116
32	61	25	16	29.5	138 984 008	1.145	86	111	246	14	84	116

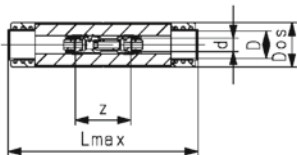


COOL-FIT 2.0 Push System Flow control valve Both sides connection with Eurocone

Model:

- Flow control valve made of brass, impact resistant plastic and EPDM seals
- Both sides connection to COOL-FIT 2.0 Push System
- Measuring range: 3.0 – 12.0 (l/min)
- Measuring accuracy: $\pm 10\%$ of the displayed value
- Insulation made of NBR and shells of TPE
- Package contents: 1x valve, 2x adaptors, 2x compression rings, 1x insulation shell

d (mm)	D (mm)	DN (mm)	PN (bar)	kv-100-value ($\Delta p=1$ bar) (l/min)	Code	Weight (kg)	Dos (mm)	Lmax (mm)	z (mm)
16	44	12	10	30.8	138 984 025	0.625	69	252	82
20	48	15	10	30.8	138 984 026	0.669	69	252	86

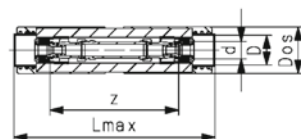


COOL-FIT 2.0 Push System Flow control valve Both sides connection with iFIT

Model:

- Flow control valve made of brass, impact resistant plastic and EPDM seals
- Both sides connection to COOL-FIT 2.0 Push System
- Measuring range: 8.0 – 30.0 (l/min)
- Measuring accuracy: $\pm 10\%$ of the displayed value
- Insulation made of NBR and shells of TPE
- Package contents: 1x valve, 2x adaptors, 2x compression rings, 1x insulation shell

d (mm)	D (mm)	DN (mm)	PN (bar)	kv-100-value ($\Delta p=1$ bar) (l/min)	Code	Weight (kg)	Dos (mm)	Lmax (mm)	z (mm)
25	54	20	10	83.3	138 984 027	1.338	86	332	238
32	61	25	10	83.3	138 984 028	1.328	86	332	238

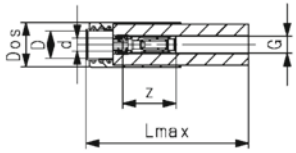




COOL-FIT 2.0 Push System Flow control valve With Eurocone and G-thread connection

Model:

- Flow control valve made of brass, impact resistant plastic and EPDM seals
- One side connection to COOL-FIT 2.0 Push System
- One side connection with thread
- Measuring range: 3.0 – 12.0 (l/min)
- Measuring accuracy: $\pm 10\%$ of the displayed value
- Insulation made of NBR and shells of TPE
- Package contents: 1x valve, 1x adaptor, 1x compression ring, 1x insulation shell



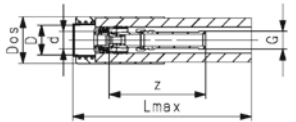
d (mm)	D (mm)	Thread	Size (inch)	DN (mm)	PN (bar)	kv-100-value ($\Delta p=1$ bar) (l/min)	Code	Weight (kg)	Dos (mm)	Lmax (mm)	z (mm)
16	44	G	3/4	12	10	30.8	138 984 015	0.426	69	252	72
20	48	G	3/4	15	10	30.8	138 984 016	0.448	69	252	83



COOL-FIT 2.0 Push System Flow control valve With iFIT and G-thread connection

Model:

- Flow control valve made of brass, impact resistant plastic and EPDM seals
- One side connection to COOL-FIT 2.0 Push System
- One side connection with thread
- Measuring range: 8.0 – 30.0 (l/min)
- Measuring accuracy: $\pm 10\%$ of the displayed value
- Insulation made of NBR and shells of TPE
- Package contents: 1x valve, 1x adaptor, 1x compression ring, 1x insulation shell



d (mm)	D (mm)	Thread	Size (inch)	DN (mm)	PN (bar)	kv-100-value ($\Delta p=1$ bar) (l/min)	Code	Weight (kg)	Dos (mm)	Lmax (mm)	z (mm)
25	54	G	1	20	10	83.3	138 984 017	0.887	86	332	179
32	61	G	1	25	10	83.3	138 984 018	0.882	86	332	179

COOL-FIT 2.0 Push System Accessories



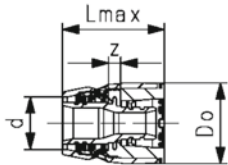
COOL-FIT 2.0 Push System Adaptor kit

Model:

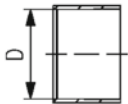
- Adapter made of high-performance plastic PPSU
- Compression ring made of PP-H
- Package contents: 1x adaptor, 1x compression ring

Note:

Additionally needed for COOL-FIT 2.0 Push System, T 90° equal and T90° reduced

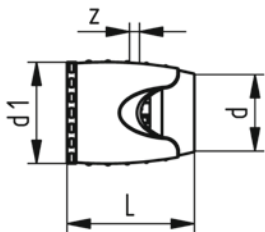


d (mm)	D (mm)	DN (mm)	PN (bar)	Code	Weight (kg)	Lmax (mm)	z (mm)	Do (mm)
16	44	12	16	738 904 055	0.045	48	4.5	29
20	48	15	16	738 904 056	0.039	49	4.5	33
25	54	20	16	738 904 057	0.104	62	7.5	44
32	61	25	16	738 904 058	0.099	63	7.5	50



iFIT Adaptor PPSU

- Material: PPSU, PA



d (mm)	d1 (mm)	Code	SP	Weight (kg)	L (mm)	z (mm)
16	30	762 101 030	10	0.024	48	5
20	34	762 101 031	10	0.028	49	5
25	45	762 101 034	5	0.070	62	8
32	52	762 101 035	5	0.085	63	8

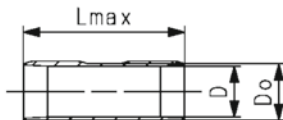


COOL-FIT 2.0 Push System Pipe shell

Model:

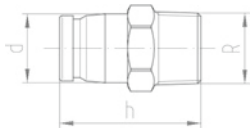
- Shell for easy installation in standard pipe clips

d (mm)	D (mm)	Do (mm)	Code	SP	Weight (kg)	Lmax (mm)
16	44	52	738 014 005	50	0.080	200
20	48	56	738 014 006	40	0.086	200
25	54	62	738 014 007	30	0.096	200
32	61	69	738 014 008	30	0.107	200



iFIT Transition module brass With male thread

- Material: brass, dezincification resistant
- Connection: male thread
- *as long as stock last

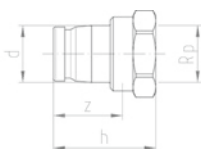


	d (mm)	Thread Type	Size (inch)	Code	SP	Weight (kg)	h (mm)
*	16 - 20	R	3/8	762 101 346	5	0.057	42
*	16 - 20	R	1/2	762 101 265	10	0.060	42
*	16 - 20	R	3/4	762 101 266	10	0.071	43
*	25 - 32	R	3/4	762 101 277	2	0.135	51
*	25 - 32	R	1	762 101 278	2	0.175	55

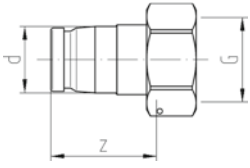
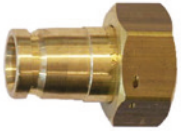


iFIT Transition module brass With female thread

- Material: brass, dezincification resistant
- Connection: female thread
- *as long as stock last



	d (mm)	Thread Type	Size (inch)	Code	SP	Weight (kg)	h (mm)	z (mm)
*	16 - 20	Rp	1/2	762 101 267	10	0.065	36	23
*	16 - 20	Rp	3/4	762 101 268	10	0.085	39	24
*	25 - 32	Rp	3/4	762 101 279	2	0.127	45	31
*	25 - 32	Rp	1	762 101 280	2	0.175	49	32



iFIT Transition union module brass
With flat sealed

- Material: brass, dezincification resistant
- Supplied with: sealing

d (mm)	Thread Type	Size (inch)	Code	SP	Weight (kg)	z (mm)
16 - 20	G	½	762 101 276	2	0.070	41
16 - 20	G	¾	762 101 273	5	0.064	35
25 - 32	G	¾	762 101 281	2	0.155	48
25 - 32	G	1	762 101 282	1	0.179	55
25 - 32	G	1 ¼	762 101 283	1	0.251	48
25 - 32	G	1 ½	762 101 284	1	0.357	50

COOL-FIT 2.0 Push System Tools



iFIT Tool set for ML- and PB pipes plastic

d16 / d20 with pipe scissor, d25 / d32 with pipe cutter

d (mm)	Code	SP	Weight (kg)
16 / 20	762 101 122	1	1.163
25 / 32	762 101 133	1	1.371



iFIT Chamfering tool for ML- and PB pipes

- Material: steel, plastic

d (mm)	Code	SP	Weight (kg)
16	762 101 116	1	0.188
20	762 101 120	1	0.205
25	762 101 125	1	0.252
32	762 101 132	1	0.323



JRG Sanipex MT Multi purpose cutter steel d12 - d26

- Material: steel, plastic

d (mm)	JRG Code	GF Code	SP	Weight (kg)	b (mm)	l (mm)
12-26	4837.025	355 632 420	1	0.310	196	73
Spare blades	4837.005	355 632 421	1	0.012		



iFIT plastic pipe cutter For ML- and PB pipes d16-d32

d (mm)	Code	SP	Weight (kg)
16 - 32	762 101 117	1	0.386
Spare blades	762 101 118	1	0.005



iFIT Chamfering tool to battery tools metal

d (mm)	Code	SP	Weight (kg)
16	762 101 351	1	0.188
20	762 101 352	1	0.205
25	762 101 353	1	0.252
32	762 101 354	1	0.323



iFIT Grab rail set metal

d (mm)	Code	SP	Weight (kg)
16 - 32	762 101 361	1	0.050



iFIT Quick-change insert metal

d (mm)	Code	SP	Weight (kg)
16 - 32	762 101 362	1	0.039



**iFIT Tool case empty plastic
For chamfering tool**

d (mm)	Code	SP	Weight (kg)
16 - 32	762 101 363	1	2.000



**iFIT Outside pipe bending tool metal
For ML pipes**

- Material: metal
- *as long as stock last

	d (mm)	Code	SP	Weight (kg)	L (mm)
*	16	762 101 112	1	0.442	500
*	20	762 101 113	1	0.541	500
*	25	762 101 114	1	0.636	500
*	32	762 101 115	1	0.798	500

Local support around the world

Visit our webpage to get in touch with your local specialist:

www.gfps.com/our-locations



The information and technical data (altogether "Data") herein are not binding, unless explicitly confirmed in writing.
The Data neither constitutes any expressed, implied or warranted characteristics, nor guaranteed properties or a guaranteed durability. All Data is subject to modification. The General Terms and Conditions of Sale of Georg Fischer Piping Systems apply.